

## **CONTENTS ..... 71-102**

AutoPilot™ Phase II with Square Center Connector .....	72-73
AutoPilot™ Phase II with Flexible Center Connector .....	74-75
AutoPilot™ Phase II Control Valve Assembly .....	76
AutoPilot™ Phase II Liquid Pump Assembly ..	77-82
AutoPilot™ Airlogic™ Control Box .....	83-84
QuickFlush™ Static Mixer Assembly .....	85
AutoPilot™ Wall-Mount Static Mixer Assembly ...	86
AutoPilot™ Paint/Flush Assembly .....	87
2-Gallon Solvent Flush SS Pot .....	88
2-Gallon Solvent Flush SS Top Feed Pot .....	89
5-Gallon Solvent Flush SS Top Feed Pot .....	90
Material Tanks SS Top Feed .....	91-94
Material Tanks SS Bottom Feed .....	95-98
Proportioner Hoses .....	99-100
Whip Hose Attachment .....	101

# AUTOPILOT™ UNIT DIAGRAMS/PARTS LIST

## AutoPilot™ Phase II with Square Center Connector

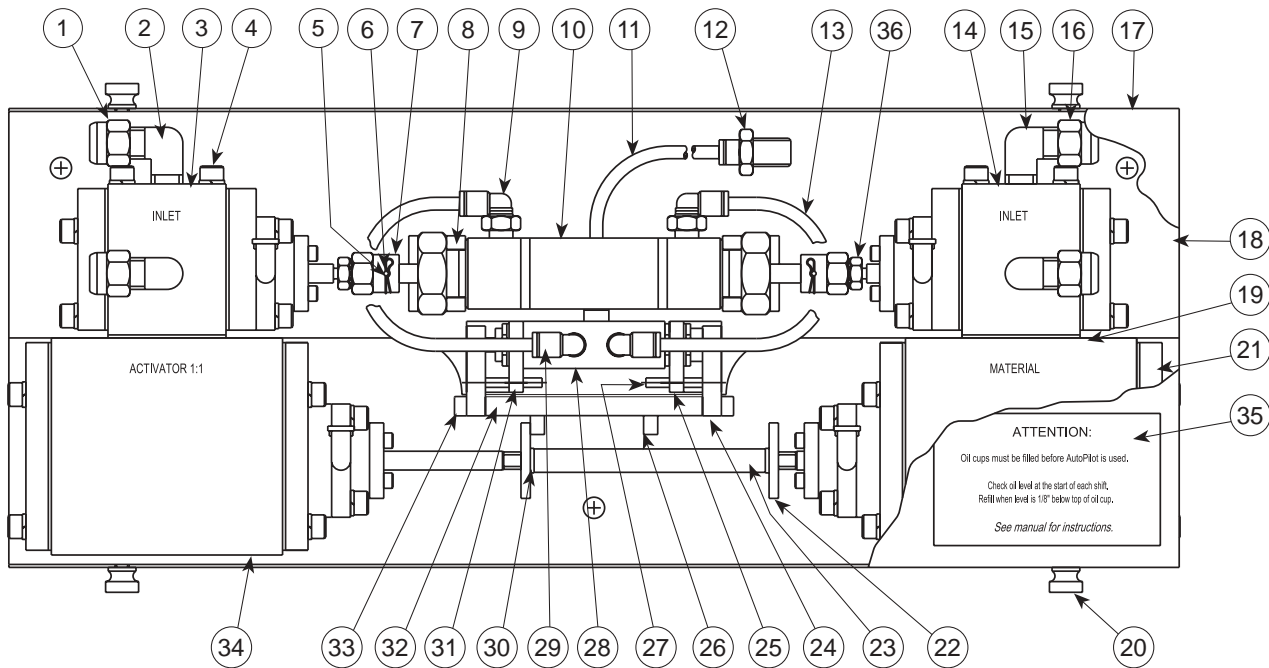


Diagram Number	Description	Part Number
----------------	-------------	-------------

1	1/4" Nut/Sleeve Assembly, Brass	82071
2	1/4" Tube Fitting, Male, Elbow	81823
3	Valve Assembly, Left Hand	41641
4	Screw, Socket Head Cap	81407
5	Clevis Pin	40754
6	Clip, Hairpin, 0.035 Wire	40742
7	Connector, Flexible Joint	50244
8	Bracket, Air Cylinder	41698
9	Connector, Elbow, Male, Swivel	41944
10	Air Cylinder, 7/8" Bore	51727
11	Tubing	40893
12	5/32" Tube, Connector, Male, Straight	81800
13	Tubing	40892
14	Valve Assembly, Right Hand	41644
15	3/8" Tube Fitting, Male Elbow	81824
16	3/8" Nut/Sleeve Assembly, Brass	82072
17	Cover Inline, AutoPilot™	40818
18	Base Plate	41679
19	Gasket, Valve Block	41680
20	Thumbscrew, Knurled Head	40727
21	Liquid Pump Assembly, Inline, 1:1	41673
22	Striker Plate	40756
23	Connecting Bar	41694

Continued on next page

# AUTOPILOT™ UNIT DIAGRAMS/PARTS LIST

## AutoPilot™ Phase II with Square Center Connector (continued)

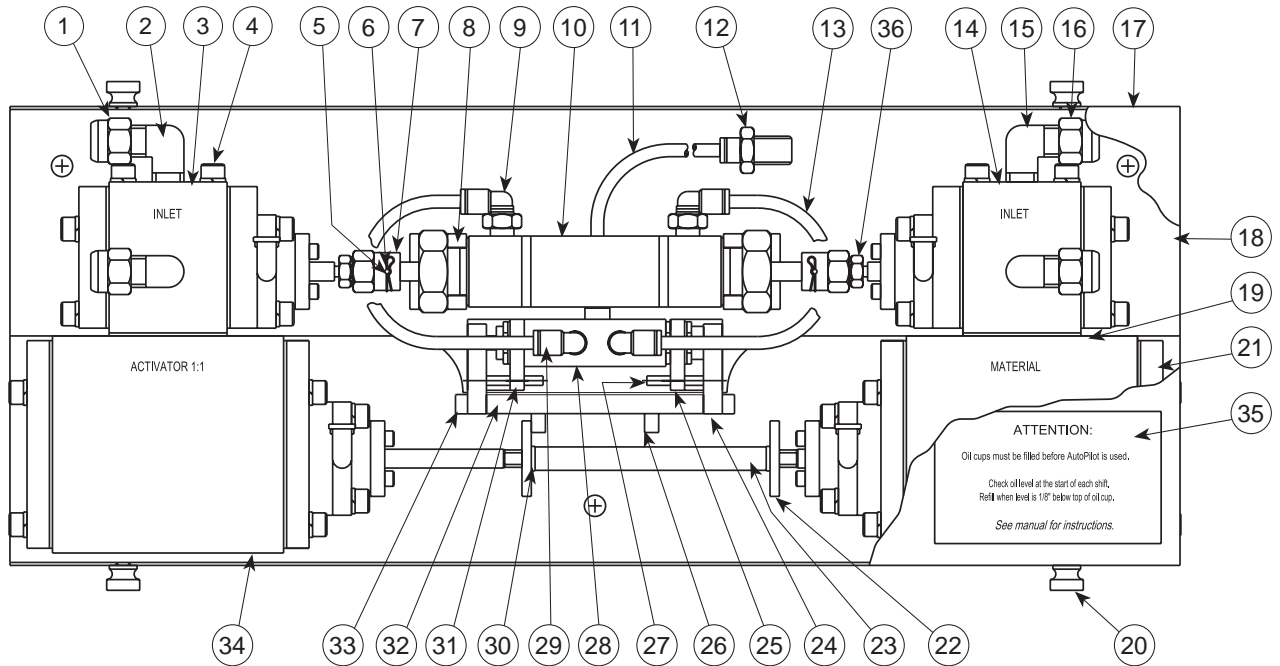


Diagram Number	Description	Part Number
24	Arm, Connecting, Trip Air	40761
25	Valve Mounting Bracket, Right Side	40758
26	Pin, Spring, 3/16" x 1/2"	15245
27	Pin, Spring, 1/8" Dia. x 1"	21980
28	Spool Valve, 4-Way	40740
29	Connector, Elbow, Male Swivel	40744
30	Washer, Lock, No. 10	81379
31	Valve Mounting Bracket, Left Side	40759
32	Connecting Arm	41696
33	Screw, Cap, 8-32NC x 1/2"	40745
34	Liquid Pump Assembly, 1:1 Inline	41647
34	Liquid Pump Assembly, 2:1 Inline	41640
34	Liquid Pump Assembly, 3:1 Inline	41671
34	Liquid Pump Assembly, 4:1 Inline	41672
34	Liquid Pump Assembly, 5:1 Inline	41946
35	Label, Lubrication Warning	49353
36	Jam Nut	81430
Not Shown	AutoPilot™ Repair Kit Phase II 1:1	9711-RK
Not Shown	AutoPilot™ Repair Kit Phase II 2:1	9721-RK
Not Shown	AutoPilot™ Repair Kit Phase II 3:1	9731-RK
Not Shown	AutoPilot™ Repair Kit Phase II 4:1	9741-RK
Not Shown	AutoPilot™ Repair Kit Phase II 5:1	9751-RK

# AUTOPILOT™ UNIT DIAGRAMS/PARTS LIST

## AutoPilot™ Phase II with Flexible Center Connector

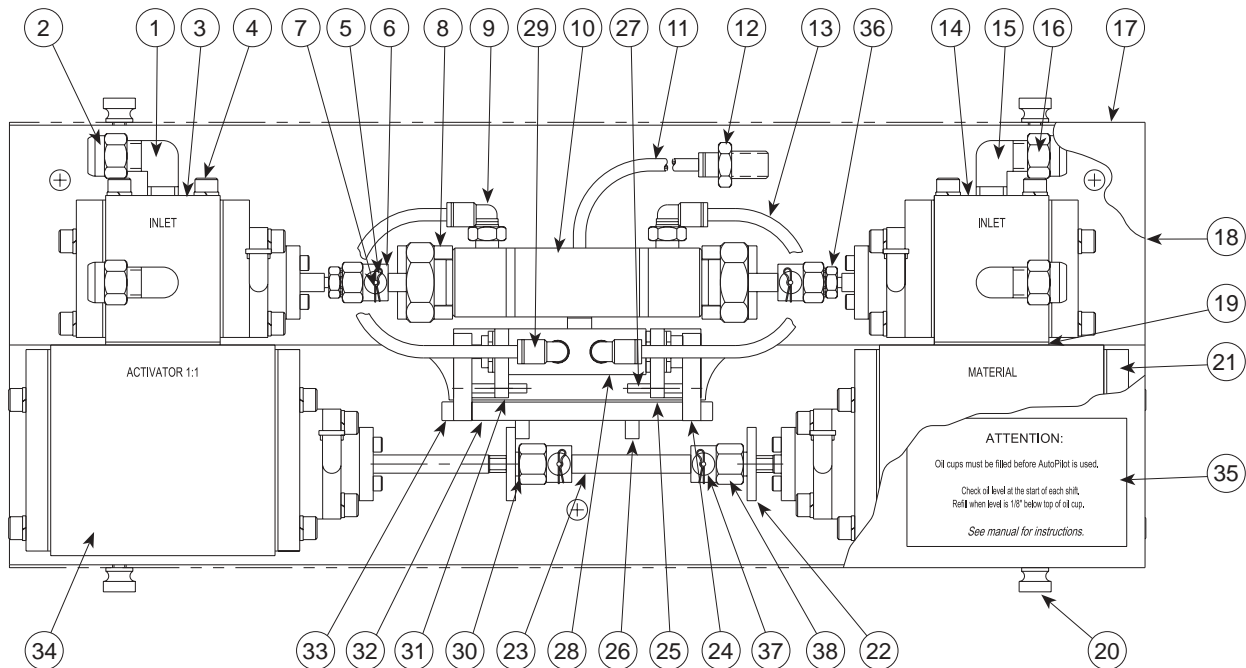


Diagram Number	Description	Part Number
1	1/4" Tube Fitting, Male Elbow	81823
2	1/4" Nut/Sleeve Assembly, Brass	82071
3	Valve Assembly, Left Hand	41641
4	Screw, Socket Head Cap	81407
5	Clip, Hairpin, .035" Wire	40742
6	Connector, Flexible Joint	50244
7	Clevis Pin	40654
8	Bracket, Air Cylinder	41698
9	Connector, Elbow, Male, Swivel	41944
10	Air Cylinder, 7/8" Bore	51727
11	Tubing	40893
12	5/32" Tube, Connector, Male, Straight	81800
13	Tubing	40892
14	Valve Assembly, Right Hand	41644
15	3/8" Tube Fitting, Male Elbow	81824
16	3/8" Nut/Sleeve Assembly, Brass	82072
17	Cover Inline, AutoPilot™	40818
18	Base Plate	41679
19	Gasket, Valve Block	41680
20	Thumbscrew, Knurled Head	40727
21	Liquid Pump Assembly, Inline 1:1	41673
21	Liquid Pump Assembly, Inline 6:1	99908
22	Striker Plate	40756
23	Connecting Bar	41694
24	Arm, Connecting, Trip Air	40761

Continued on next page

# AUTOPILOT™ UNIT DIAGRAMS/PARTS LIST

## AutoPilot™ Phase II with Flexible Center Connector (continued)

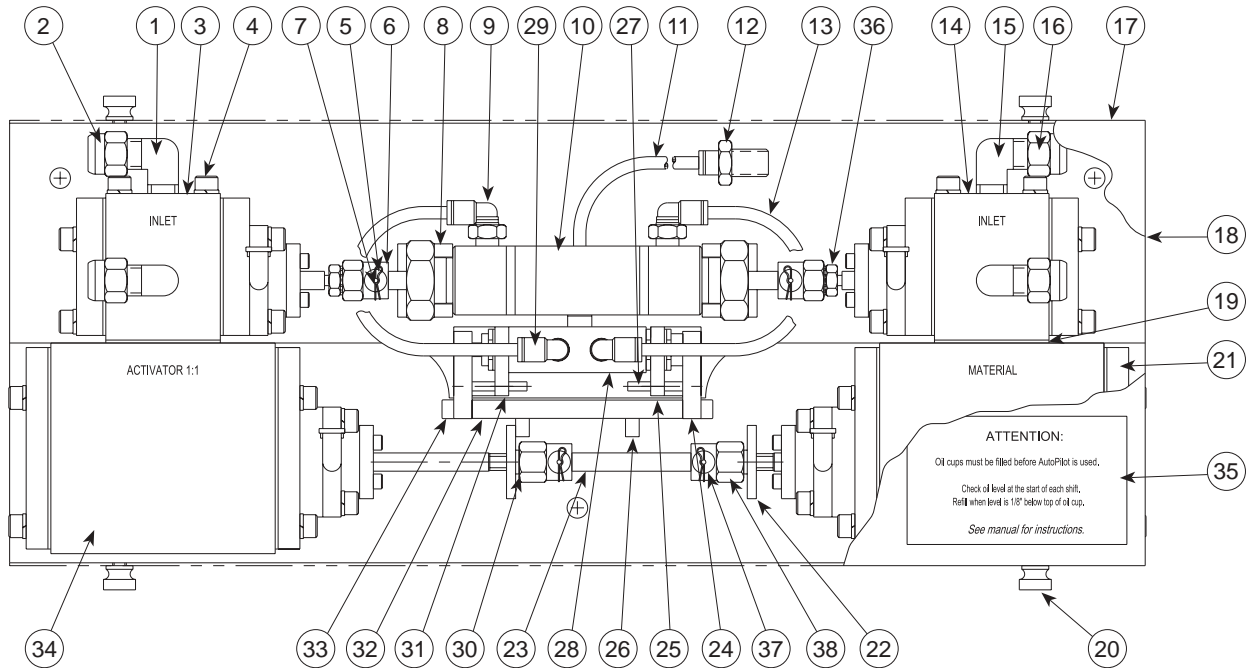


Diagram Number	Description	Part Number
25	Valve Mounting Bracket, Right Side	40758
26	Pin, Spring, 3/16" x 1/2"	15245
27	Pin, Spring, 1/8" Dia. x 1"	21980
28	Spool Valve, 4-Way	40740
29	Connector, Elbow, Male Swivel	40744
30	Washer, Lock, No. 10	81379
31	Valve Mounting Bracket, Left Side	40759
32	Connecting Arm	41696
33	Screw, Cap, 8-32 NC x 1/2"	40745
34	Liquid Pump Assembly, 1:1 Inline	41647
34	Liquid Pump Assembly, 2:1 Inline	41640
34	Liquid Pump Assembly, 3:1 Inline	41671
34	Liquid Pump Assembly, 4:1 Inline	41672
34	Liquid Pump Assembly, 5:1 Inline	41946
35	Label, Lubrication Warning	49353
36	Jam Nut	81430
37	Washer, Flexible Joint	66227
38	Connector, Flexible Joint	66192
Not Shown	AutoPilot™ Repair Kit Phase II 1:1	9711-RK
Not Shown	AutoPilot™ Repair Kit Phase II 2:1	9721-RK
Not Shown	AutoPilot™ Repair Kit Phase II 3:1	9731-RK
Not Shown	AutoPilot™ Repair Kit Phase II 4:1	9741-RK
Not Shown	AutoPilot™ Repair Kit Phase II 5:1	9751-RK
Not Shown	AutoPilot™ Repair Kit Phase II 6:1	9761-RK

# AUTOPILOT™ UNIT DIAGRAMS/PARTS LIST

## AutoPilot™ Phase II Control Valve Assembly

Left Hand Liquid Control Valve Assembly ..... Order #41641  
 Right Hand Liquid Control Valve Assembly ..... Order #41644

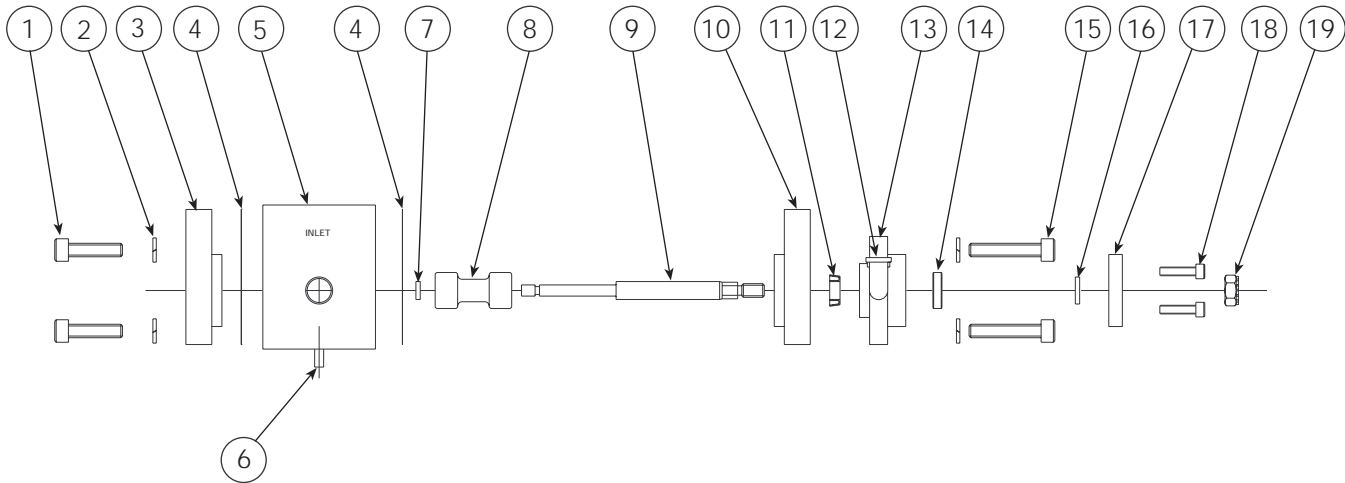


Diagram Number	Description	Part Number
1	Screw, 10-24 UNC x 3/4", SST, Socket Head	81380
2	Lockwasher, #10, SST	81379
3	Liquid Control Valve End Cap	41688
4	Upper End Cap Gasket	41681
5	Valve Body Assembly	41926
6	Pin, Spring 1/8" x 1/2"	15231
7	Retainer	81121
8	Liquid Control Valve Spool	81119
9	Liquid Control Valve Shaft	41697
10	Liquid Control Valve Seal Cap	41689
11	Variseal	81408
12	Elbow, Oil Hole Cover	41945
13	Left Hand Lube Cap	41685
13	Right Hand Lube Cap	41686
14	Bearing Insert	41699
15	Screw, 10-24 NC x 1", Socket Head	14940
16	O-Ring, Teflon®, 1/4" x 3/8" x 1/16"	81394
17	Wiper Cap	41687
18	Screw, 5-40 NC x 1/2", Socket Head	14910
19	Nut, 10-24	81430

*Note: All block end cap screws should be torqued to 60 In. lbs. Upper to lower block assembly mounting screws should be tightened in a diagonal pattern and torqued to 55 In. lbs.*

# AUTOPILOT™ UNIT DIAGRAMS/PARTS LIST

## AutoPilot™ Phase II Liquid Pump Assembly

Liquid Pump Assembly (1:1 Ratio) Right Hand Material Side ..... Order #99908

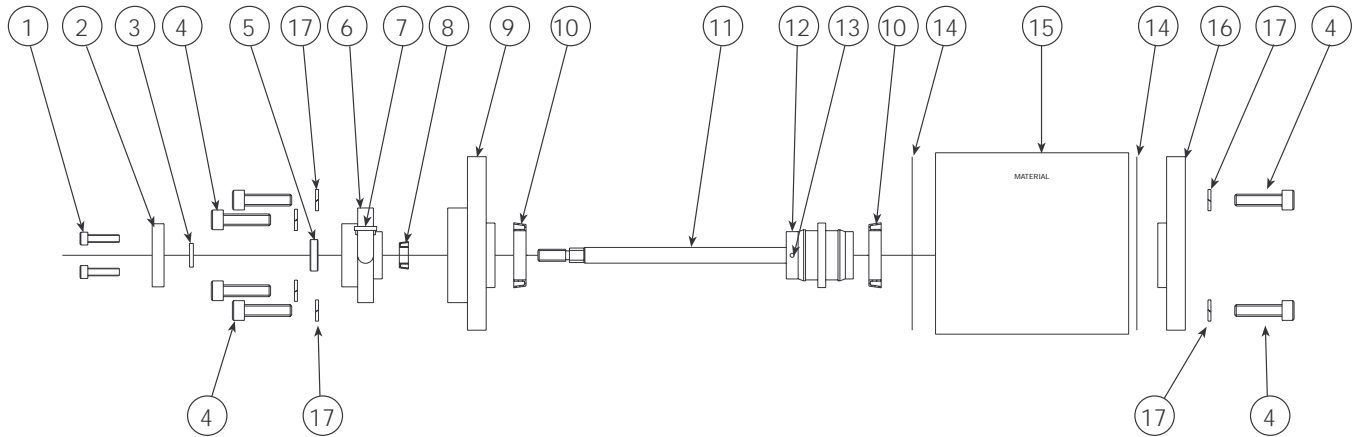


Diagram Number	Description	Part Number
1	Screw, 5 x 40 NCX x 1/2", Socket Head	14910
2	Wiper Cap	41687
3	O-Ring, Teflon®, 1/4" x 3/8" x 1/16"	81394
4	Screw, 10-24 UNC x 3/4", SST, Socket Head	81380
5	Bearing Insert	41699
6	Right Hand Lube Cap	41686
7	Elbow, Oil Hole Cover	41945
8	Variseal	81408
9	Lower Variseal End Cap	99912
10	Variseal	75164
11	Liquid Pump Connecting Rod w/1/8" Dia. Hole for Part #53505	53503
12	Liquid Pump Piston w/1/8" Dia. Hole for Part #53505	99913
13	Dowel Pin, 1/8" Dia.	53505
14	Lower End Cap Gasket	99910
15	Liquid Body Block	99909
16	Lower End Cap	99911
17	Lockwasher, #10, SST	81379

*Note: All block end cap screws should be torqued to 60 In. lbs. Upper to lower block assembly mounting screws should be tightened in a diagonal pattern and torqued to 55 In. lbs.*

Teflon is a registered trademark of E.I. DuPont

© Copyright 2002, Mattson Spray Equipment, Division of Rice Lake Weighing Systems, Inc., Rice Lake, WI USA. All rights reserved. Prices & specifications subject to change without notice.



# AUTOPILOT™ UNIT DIAGRAMS/PARTS LIST

## AutoPilot™ Phase II Liquid Pump Assembly

Liquid Pump Assembly (1:1 Ratio) Left Hand Activator Side ..... Order #41647

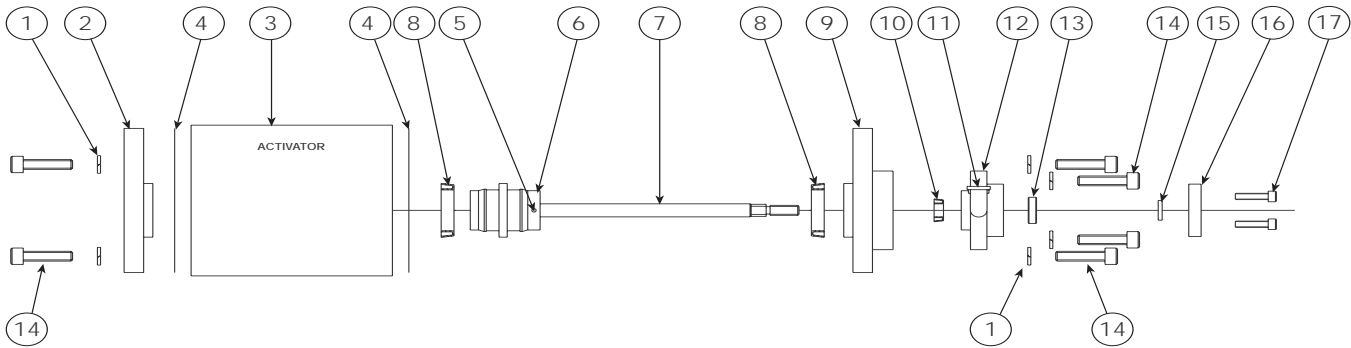


Diagram Number	Description	Part Number
1	Lockwasher, #10, 18-8, SST	81379
2	Lower End Cap	41690
3	Liquid Body Block	41674
4	Lower End Cap Gasket	41682
5	Dowel Pin, 1/16" Dia.	81391
5	Dowel Pin, 1/8" Dia.	53505
6	Liquid Pump Piston w/1/16" Dia. Hole for Part #81391	81131
6	Liquid Pump Piston w/1/8" Dia. Hole for Part #53505	53498
7	Liquid Pump Connecting Rod w/1/16" Dia. Hole for Part #81391	81130
7	Liquid Pump Connecting Rod w/1/8" Dia. Hole for Part #53505	53503
8	Variseal	81393
9	Lower Variseal End Cap	41693
10	Variseal	81408
11	Elbow, Oil Hole Cover	41945
12	Left Hand Lube Cap	41685
13	Bearing Insert	41699
14	Screw, 10-24 UNC x 3/4", SST, Socket Head	81380
15	O-Ring, Teflon®, 1/4" x 3/8" x 1/16"	81394
16	Wiper Cap	41687
17	Screw, 5-40 NC x 1/2", Socket Head	14910

*Note: All block end cap screws should be torqued to 60 In. lbs. Upper to lower block assembly mounting screws should be tightened in a diagonal pattern and torqued to 55 In. lbs.*



# AUTOPILOT™ UNIT DIAGRAMS/PARTS LIST

## AutoPilot™ Phase II Liquid Pump Assembly

**Liquid Pump Assembly (2:1 Ratio) Left Hand Activator Side ..... Order #41640**

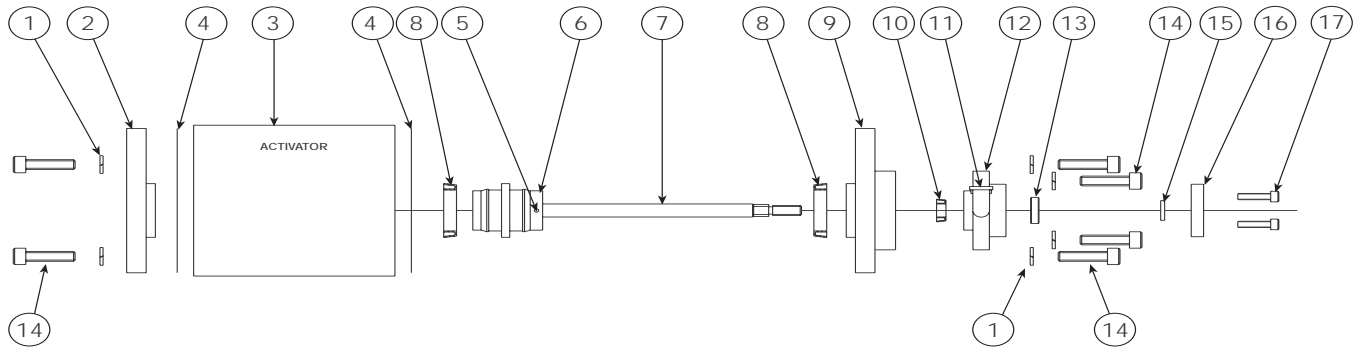


Diagram Number	Description	Part Number
1	Lockwasher, #10, 18-8, SST	81379
2	Lower End Cap	41949
3	Liquid Body Block	41947
4	Lower End Cap Gasket	41953
5	Dowel Pin, 1/16" Dia.	81391
5	Dowel Pin, 1/8" Dia.	53505
6	Liquid Pump Piston w/1/16" Dia. Hole for Part #81391	81151
6	Liquid Pump Piston w/1/8" Dia. Hole for Part #53505	53499
7	Liquid Pump Connecting Rod w/1/16" Dia. Hole for Part #81391	81130
7	Liquid Pump Connecting Rod w/1/8" Dia. Hole for Part #53505	53503
8	Variseal	82113
9	Lower Variseal End Cap	41952
10	Variseal	81408
11	Elbow, Oil Hole Cover	41945
12	Left Hand Lube Cap	41685
13	Bearing Insert	41699
14	Screw, 10-24 UNC x 3/4", SST, Socket Head	81380
15	O-Ring, Teflon®, 1/4" x 3/8" x 1/16"	81394
16	Wiper Cap	41687
17	Screw, 5-40 NC x 1/2", Socket Head	14910

*Note: All block end cap screws should be torqued to 60 In. lbs. Upper to lower block assembly mounting screws should be tightened in a diagonal pattern and torqued to 55 In. lbs.*

Teflon is a registered trademark of E.I. DuPont

© Copyright 2002, Mattson Spray Equipment, Division of Rice Lake Weighing Systems, Inc., Rice Lake, WI USA. All rights reserved. Prices & specifications subject to change without notice.



# AUTOPILOT™ UNIT DIAGRAMS/PARTS LIST

## AutoPilot™ Phase II Liquid Pump Assembly

Liquid Pump Assembly (3:1 Ratio) Left Hand Activator Side ..... Order #41671

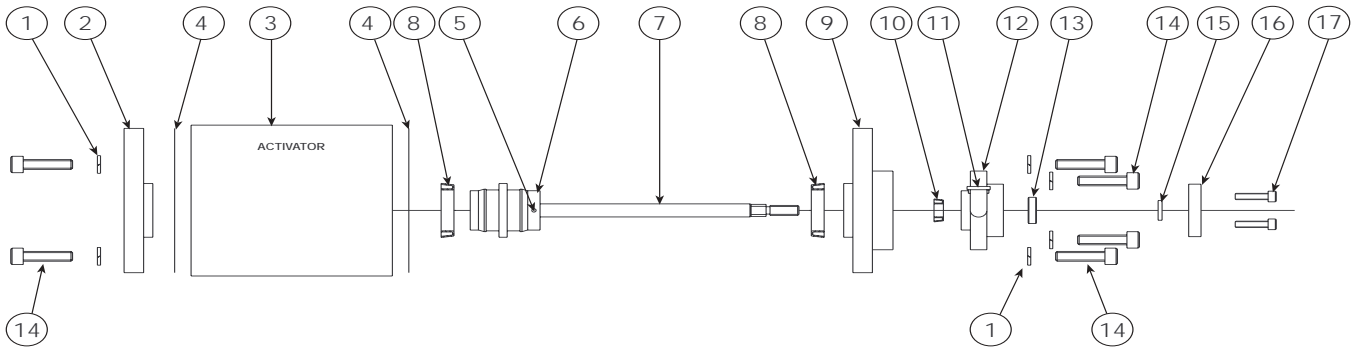


Diagram Number	Description	Part Number
1	Lockwasher, #10, 18-8, SST	81379
2	Lower End Cap	41691
3	Liquid Body Block, 3:1 Ratio	41675
4	Lower End Cap Gasket	41683
5	Dowel Pin, 1/16" Dia	81391
5	Dowel Pin, 1/8" Dia	53505
6	Liquid Pump Piston w/1/16" Dia. Hole for Part #81391	81132
6	Liquid Pump Piston w/1/8" Dia. Hole for Part #53505	53500
7	Liquid Pump Connecting Rod w/1/16" Dia. Hole for Part #81391	81130
7	Liquid Pump Connecting Rod w/1/8" Dia. Hole for Part #53505	53503
8	Variseal	81397
9	Lower Variseal End Cap	41736
10	Variseal	81408
11	Elbow, Oil Hole Cover	41945
12	Left Hand Lube Cap	41685
13	Bearing Insert	41699
14	Screw, 10-24 UNC x 3/4" SST Socket Head	81380
15	O-Ring, Teflon®, 1/4" x 3/8" x 1/16"	81394
16	Wiper Cap	41687
17	Screw, 5-40 NC x 1/2, Socket Head	14910

Note: All block end cap screws should be torqued to 60 In. lbs. Upper to lower block assembly mounting screws should be tightened in a diagonal pattern and torqued to 55 In. lbs.

# AUTOPILOT™ UNIT DIAGRAMS/PARTS LIST

## AutoPilot™ Phase II Liquid Pump Assembly

Liquid Pump Assembly (4:1 Ratio) Left Hand Activator Side ..... Order #41672

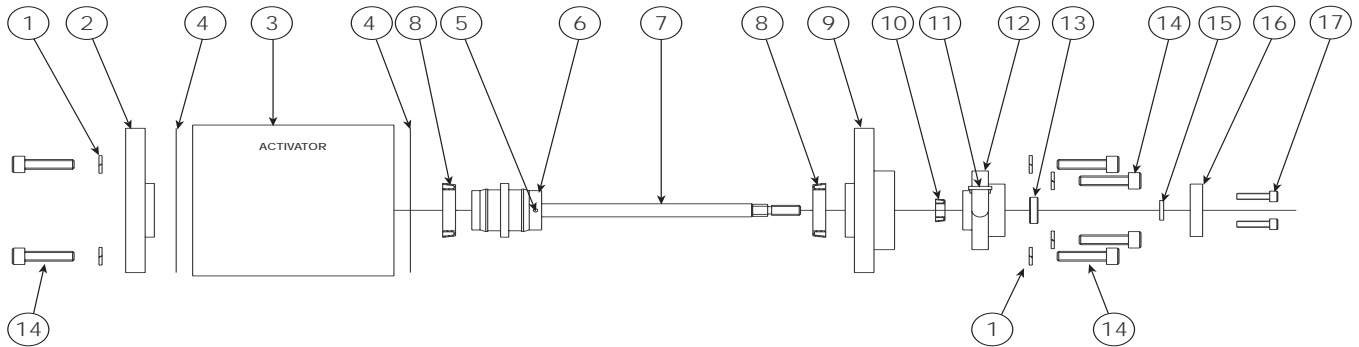


Diagram Number	Description	Part Number
1	Lockwasher, #10, 18-8, SST	81379
2	Lower End Cap	41692
3	Liquid Body Block, 4:1 Ratio	41676
4	Lower End Cap Gasket	41684
5	Dowel Pin, 1/16" Dia.	81391
5	Dowel Pin, 1/8" Dia.	53505
6	Liquid Pump Piston w/1/16" Dia. Hole for Part #81391	81154
6	Liquid Pump Piston w/1/8" Dia. Hole for Part #53505	53501
7	Liquid Pump Connecting Rod w/1/16" Dia. Hole for Part #81391	81130
7	Liquid Pump Connecting Rod w/1/8" Dia. Hole for Part #53505	53503
8	Variseal	81495
9	Lower Variseal End Cap	41737
10	Variseal	81408
11	Elbow, Oil Hole Cover	41945
12	Left Hand Lube Cap	41685
13	Bearing Insert	41699
14	Screw, 10-24 UNC x 3/4", SST, Socket Head	81380
15	O-Ring, Teflon®, 1/4" x 3/8" x 1/16"	81394
16	Wiper Cap	41687
17	Screw, 5-40 NC x 1/2", Socket Head	14910

*Note: All block end cap screws should be torqued to 60 In. lbs. Upper to lower block assembly mounting screws should be tightened in a diagonal pattern and torqued to 55 In. lbs.*

Teflon is a registered trademark of E.I. DuPont

© Copyright 2002, Mattson Spray Equipment, Division of Rice Lake Weighing Systems, Inc., Rice Lake, WI USA. All rights reserved. Prices & specifications subject to change without notice.



# AUTOPILOT™ UNIT DIAGRAMS/PARTS LIST

## AutoPilot™ Phase II Liquid Pump Assembly

Liquid Pump Assembly (5:1 Ratio) Left Hand Activator Side ..... Order #41946

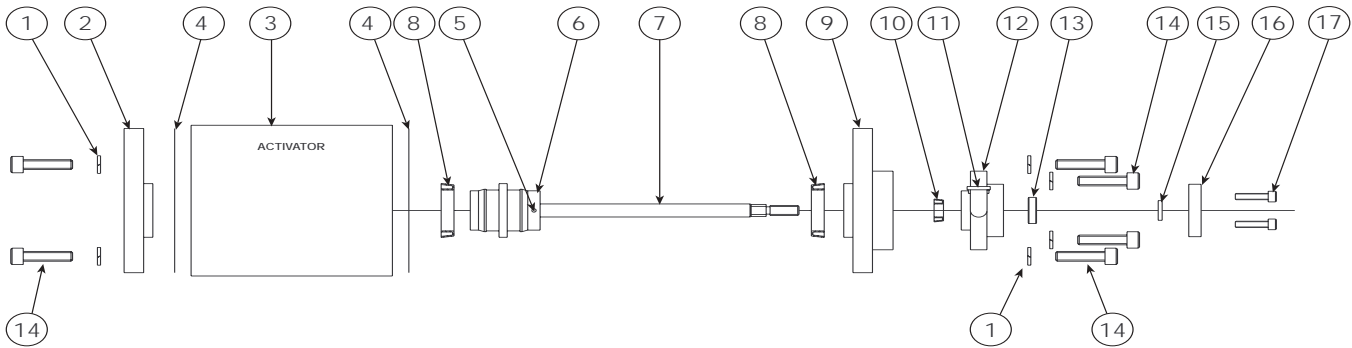


Diagram Number	Description	Part Number
1	Lockwasher, #10, 18-8, SST	81379
2	Lower End Cap	41950
3	Liquid Body Block	41948
4	Lower End Cap Gasket	41954
5	Dowel Pin, 1/16" Dia.	82214
5	Dowel Pin, 1/8" Dia.	53506
6	Liquid Pump Piston w/1/16" Dia. Hole for Part #82214	82209
6	Liquid Pump Piston w/1/8" Hole for Part #53506	53502
7	Liquid Pump Connecting Rod w/1/16" Dia. Hole for Part #82214	81130
7	Liquid Pump Connecting Rod w/1/8" Dia. Hole for Part #53506	53503
8	Variseal	82210
9	Lower Variseal End Cap	41951
10	Variseal	81408
11	Elbow, Oil Hole Cover	41945
12	Left Hand Lube Cap	41685
13	Bearing Insert	41699
14	Screw, 10-24 UNC x 3/4", SST, Socket Head	81380
15	O-ring, Teflon®, 1/4" x 3/8" x 1/16"	81394
16	Wiper Cap	41687
17	Screw, 5-40 NC x 1/2", Socket Head	14910

*Note: All block end cap screws should be torqued to 60 In. lbs. Upper to lower block assembly mounting screws should be tightened in a diagonal pattern and torqued to 55 In. lbs.*

# AUTOPILOT™ UNIT DIAGRAMS/PARTS LIST

## AutoPilot™ AirLogic™ Control Box

AutoPilot™ AirLogic™ Control Box ..... Order #9200

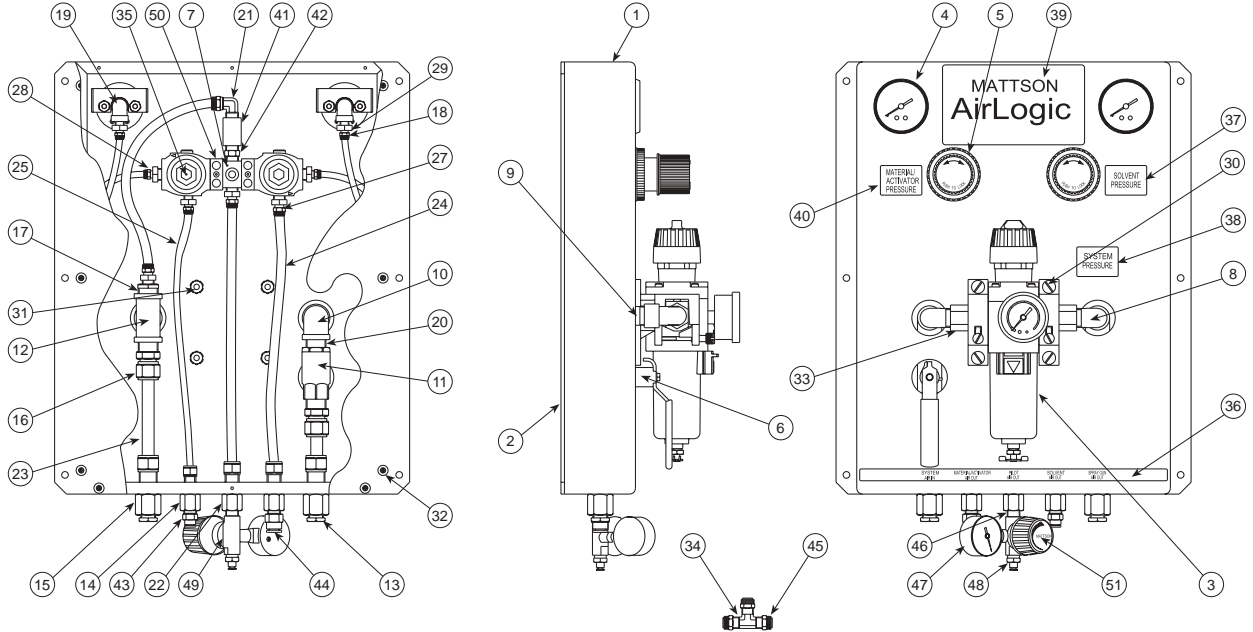


Diagram Number	Description	Part Number
1	Enclosure AirLogic™	81906
2	Back Panel, AirLogic™	81937
3	Air Filter, Regulator	5050
4	Gauge, Panel Mount 2"	81888
5	Ring, Bracket Retaining	40110
6	Extension, Ball Valve Stem	81886
7	Center Connector, R73G	49560
8	Elbow, 90 Degree Street	81889
9	Nipple, 1/2" NPT x 1-1/2" Brass	81876
10	Elbow, 1/2" NPT Female Brass	81877
11	Ball Valve, 1/2" NPT Female	81885
12	Fitting, Tee 1/2" NPT Brass	81875
13	Bushing, Hex 3/8" NPT x 1/4" NPT	81927
14	Tube Fitting, Bulkhead	81884
15	Tube Fitting, Bulkhead	81882
16	Tube Fitting, Male Connector	81881
17	Bushing, 1/2" NPT Male x 1/4"	81880
18	Nut/Sleeve Assembly, Brass 1/4" OD Tube	82071
19	Elbow, 1/8" NPT Female Brass	81874
20	Nipple, 1/2" NPT x Close Brass	81879
21	Tube Fitting, Male Elbow	81654
22	Tube Fitting, Bulkhead	81883
23	Tubing, Rigid Copper 1/2"	81887
24	Tubing, 3/8" OD Nylon 11	81911
25	Tubing, 1/4" OD x .035" Wall	81334

Teflon is a registered trademark of E.I. DuPont

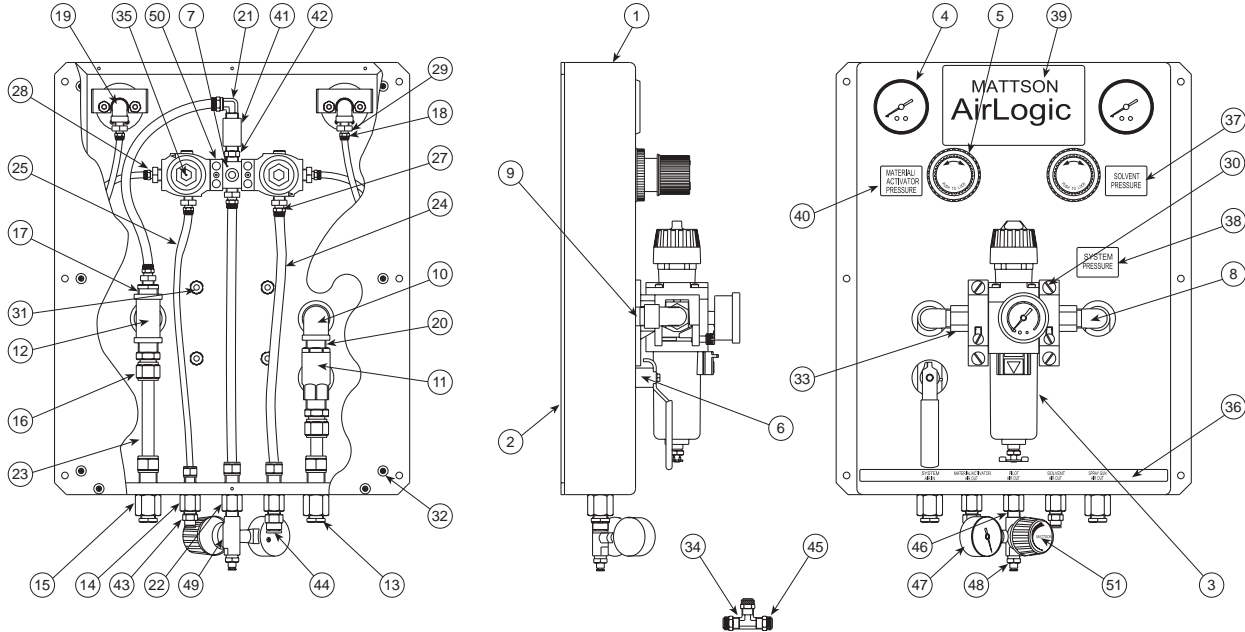
© Copyright 2002, Mattson Spray Equipment, Division of Rice Lake Weighing Systems, Inc., Rice Lake, WI USA. All rights reserved. Prices & specifications subject to change without notice.



# AUTOPILOT™ UNIT DIAGRAMS/PARTS LIST

## AutoPilot™ AirLogic™ Control Box (continued)

AutoPilot™ AirLogic™ Control Box ..... Order #9200



**Diagram  
Number**

**Description**

**Part  
Number**

27	Tube Fitting, Male Connector	40221
28	Tube Fitting, Male Connector	81832
29	Tube Fitting, Male Connector	81831
30	Screw, 1/4"-20 NC x 1/2"	40097
31	Nut, Kep 1/4"-20 Hex	34711
32	Screw, Flat Head Phillips	81878
33	End Block, Inlet 1/2" NPT	81295
34	Tube Fitting, Union Tee	82110
35	Regulator, R73G 5-60 PSI	49561
36	Label, Inlet/Outlet Ports	81870
37	Label, Solvent Pressure	81869
38	Label, System Pressure	81867
39	Label, AirLogic™	81865
40	Label, Material/Activator Pressure	81866
41	Coupler, 1/4" NPT 304 SST	7370
42	Check Valve, 1/4" NPT Male	81653
43	Connector, Male 1/4" Dia.	81383
44	Connector, Male Straight	82139
45	Nut/Sleeve	82072
46	Nipple, Close Pipe 1/4" NPT	81194
47	Gauge, 1-1/2" in 0-120 PSI	40306
48	Connector, Male 5/32" Dia.	81800
49	Regulator, R46	40286
50	Connector, Quick Regulator	49559
51	Decal, Mattson Logo	81193

# AUTOPILOT™ UNIT DIAGRAMS/PARTS LIST

## QuickFlush™ Static Mixer Assembly

QuickFlush™ Static Mixer Assembly ..... Order #9145

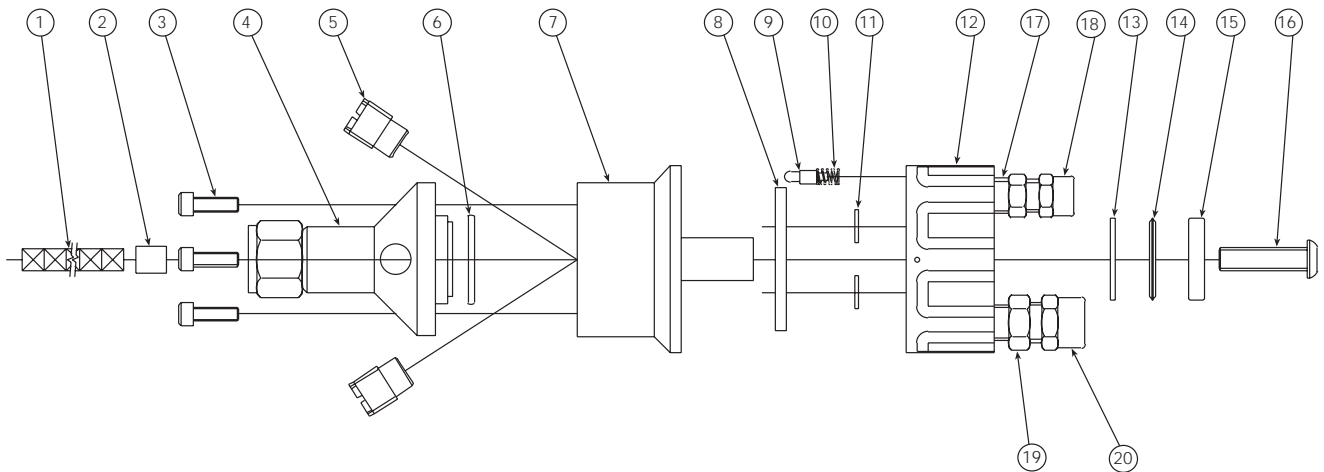


Diagram Number	Description	Part Number
1-20	QuickFlush™ Static Mixer Assembly	9145
1	Mixer Element, 12 Segment	81659
	Mixer Element, 10-Pack	7095
2	Mixer Bushing	81814
3	Cap Screw, 10-24 NC x 1/2" Hex	14935
4	Mixer Top Assembly	40844
5	Check Valve Assembly	81756
6	O-Ring, Teflon® Encapsulated	40848
7	Mixer, Chamber Base Assembly	40846
8	Valve Gasket	82232
9	Detent	81754
10	Detent Spring	40057
11	Gasket, Mixer Base	82233
12	Base Assembly	40849
13	Thrust Bearing Assembly	82235
14	Thrust Needle Bearing	82236
15	Bearing, Thrust Plate	82237
16	Cap Screw, 1/4"-20 NC x 1" Hex	14969
17	Tube Fitting, Male Connector 1/4" OD Tubing x 1/8" NPT	81831
18	Nut/Sleeve Assembly, Brass 1/4" OD Tube	82071
19	Tube Fitting, Male Connector 3/8" OD Tubing x 1/8" NPT	81822
20	Nut/Sleeve Assembly, Brass 3/8" OD Tube	82072
Not Shown	Check Valve Removal Tool	81897

Teflon is a trademark of E.I. DuPont

© Copyright 2002, Mattson Spray Equipment, Division of Rice Lake Weighing Systems, Inc., Rice Lake, WI USA. All rights reserved.  
Prices & specifications subject to change without notice.



# AUTOPILOT™ UNIT DIAGRAMS/PARTS LIST

## AutoPilot™ Wall Mount Static Mixer Assembly

AutoPilot™ Wall Mount Static Mixer Assembly ..... Order #9141

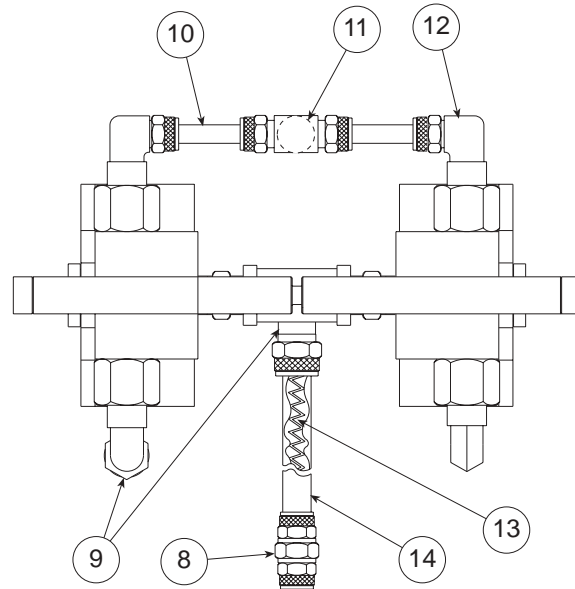
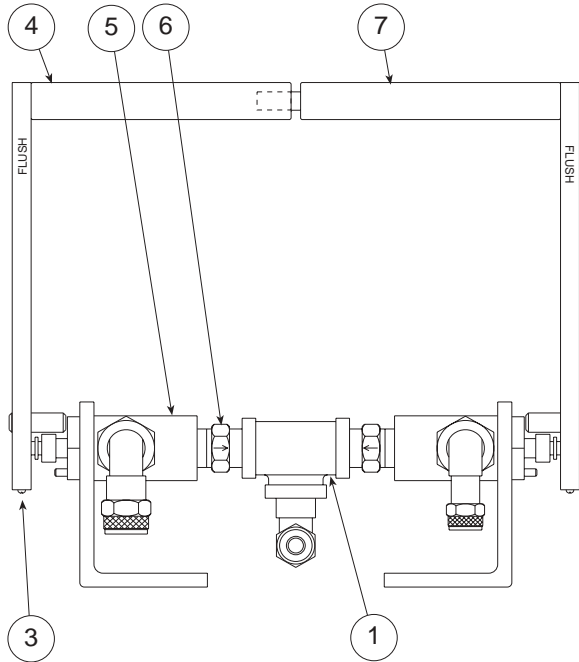


Diagram Number	Description	Part Number
1-14	AutoPilot™ Wall Mount Static Mixer Assembly	9141
1	Tee Fitting, 1/4" NPT, Plated	81658
2	Static Mixer Wall Mount	81625
3	Handle Screw	81745
4	Handle Assembly, Female	81708
5	3-Way Ball Valve, 1/4" NPTF, SS	81652
6	Check Valve, 1/4" NPT Male, SS	45425
7	Handle Assembly, Male	81709
8	3/8" OD Tube Fitting, Plated Union	81657
9	3/8" OD Tube Fitting, Plated Male Elbow, 1/4" NPT	81654
10	Replacement Nut with Sleeve Assembly, 3/8" OD	82072
11	1/4" OD Nylon Tubing, (Specify Length in Feet)	81334
12	1/4" OD Tube Fitting, Plated Union Tee	81656
13	1/4" OD Tube Fitting, Plated Male Elbow, 1/4" NPT	81655
14	Replacement Nut with Sleeve Assembly, 1/4" OD	82071
13	Mixer Element, 12-Segment	81659
	Mixer Element, 10-Pack	7095
14	Mixer Assembly (3/8" OD Tubing, Mixer Element, and End Fittings)	81871



# AUTOPILOT™ UNIT DIAGRAMS/PARTS LIST

## AutoPilot™ Paint/Flush Assembly

QuickFlush™ Paint/Flush Assembly ..... Order #9143

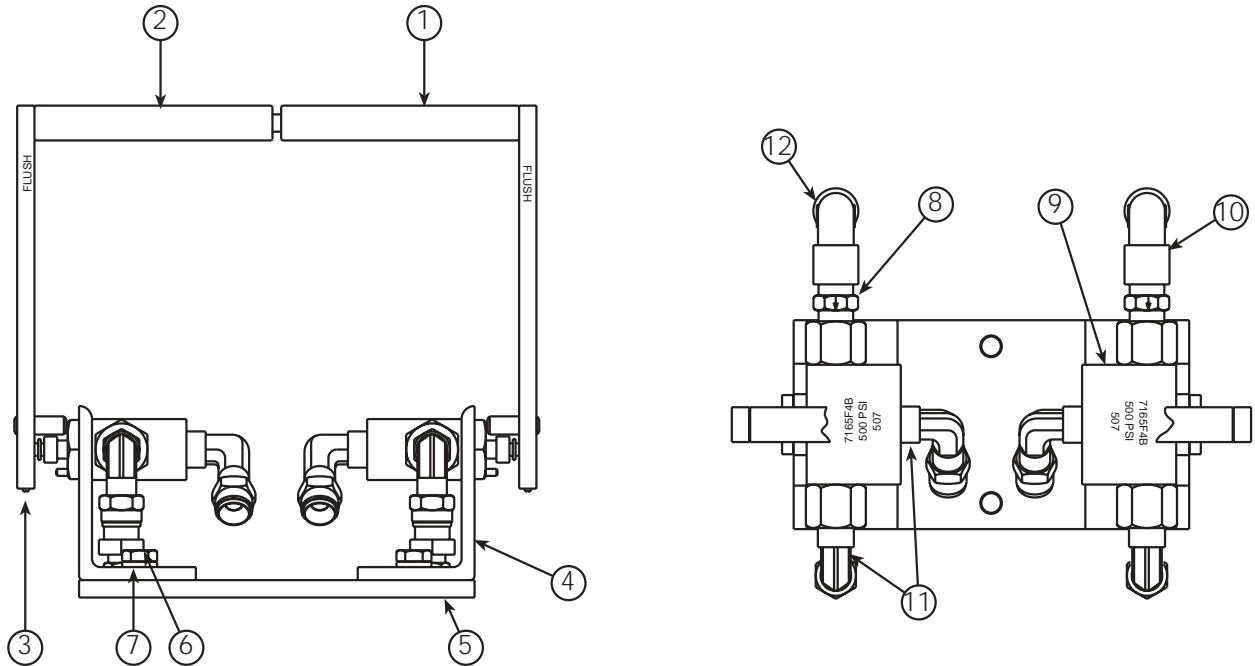


Diagram Number	Description	Part Number
1-12	AutoPilot™ Paint/Flush Assembly	9143
1	Handle Assembly, Female	81708
2	Handle Assembly, Male	81709
3	Handle Screw	81745
4	Mixer Mount	81625
5	Base Plate	82079
6	Screw, Cap Hex Head 1/4-20	14955
7	Lockwasher, 1/4"	81986
8	Check Valve, 1/4" NPT Male, Brass	81653
9	3-Way Ball Valve, 1/4" NPTF, SS	81652
10	Elbow, 90 Degree, 1/4" NPT Plated	81350
11	3/8" OD Tube Fitting, Plated Male Elbow, 1/4" NPT	81654
12	1/4" OD Tube Fitting, Plated Male Straight, 1/4" NPT	81832
Not Shown	Replacement Nut with Sleeve assembly, 3/8" OD	82072
Not Shown	Replacement Nut with Sleeve assembly, 1/4" OD	82071
Not Shown	1/4" OD Yellow Nylon Tubing (Specify Length in Feet)	69039
Not Shown	Y Connector for 1/4" OD Tubing	81924
Not Shown	Retaining Sleeves (3 pieces required)	69025

# AUTOPILOT™ UNIT DIAGRAMS/PARTS LIST

## Solvent Tank with Fitting

2-Gallon Solvent Flush Pot, Stainless Steel ..... Order #81945

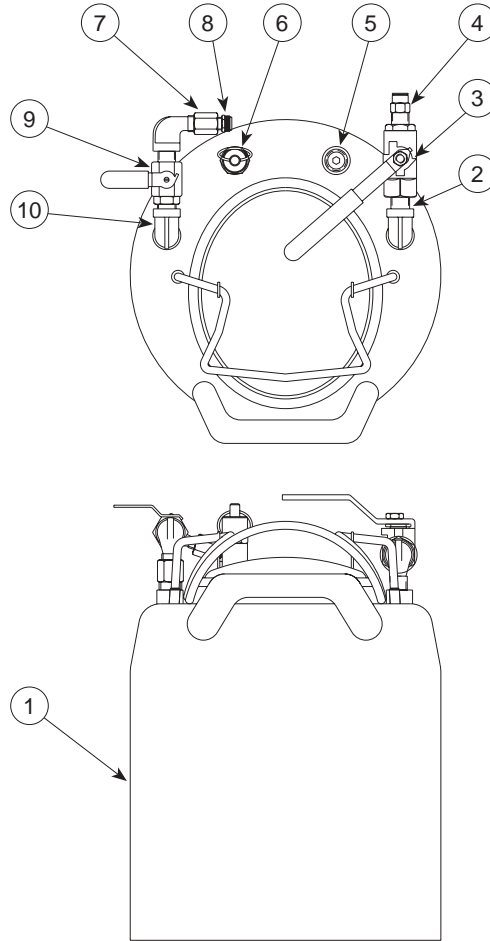


Diagram Number	Description	Part Number
1	Tank Assembly, 2 Gallon 9 in ID	81297
2	Nipple, Close 1/4" NPT x Close	7367
3	Ball Valve, 1/4" NPT Male	82040
4	Connector, Male 1/4" Dia.	81383
5	Hex Plug, 1/4" NPT Male SST	81327
6	Safety Valve, 1/4" NPT Male	81321
7	Tube Fitting, Female Connector	81840
8	Nut/Sleeve Assembly, Brass	82071
9	Ball Valve, Vented 1/4" NPT	81843
10	Elbow, 90 Degree Street	47136

## Top Feed Solvent Tank Assembly

**2-Gallon Top Feed Solvent Flush Tank, Stainless Steel ..... Order #5604**

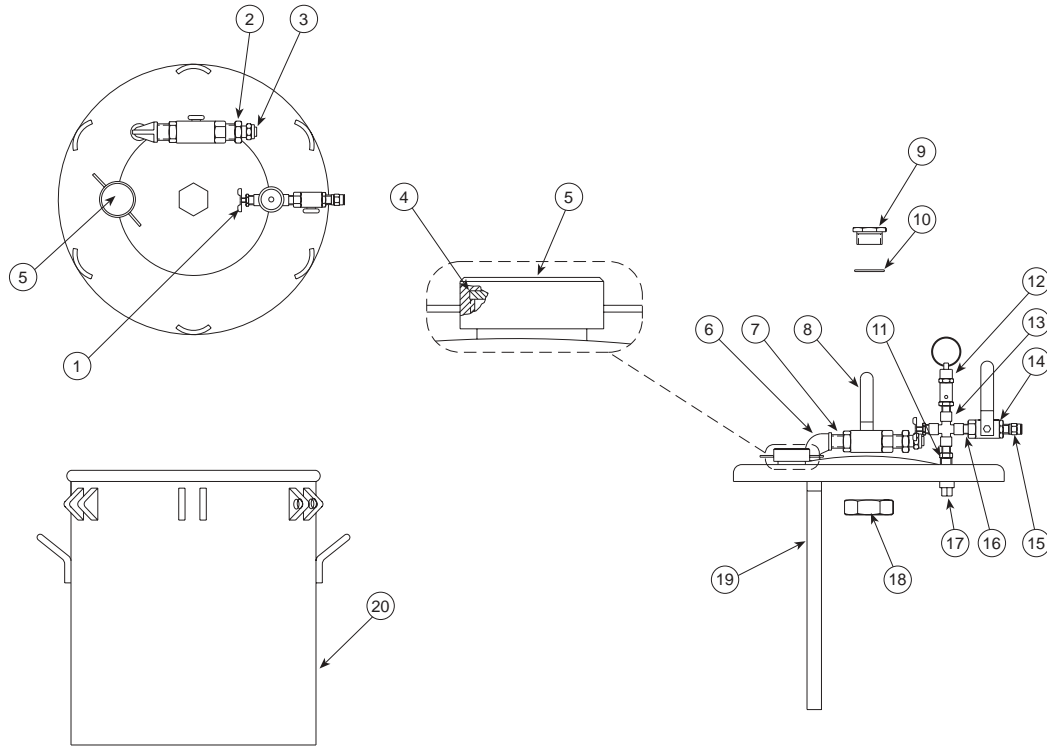


Diagram Number	Description	Part Number
1	Fitting, Drain Cock 1/4" NPT	82178
2	Tube Fitting, Male Connector	81833
3	Nut/Sleeve Assembly, Brass	82071
4	Gasket, Chlororene & Cork	82176
5	Filler Cap	82175
6	Elbow, 90 Degree Street	7372
7	Nipple, Close 3/8" NPT x Close	7366
8	Ball Valve, 3/8" NPT Female	41308
9	Plug, Tank Lid SST	82182
10	O-Ring, Teflon®	82186
11	Male Reducer, 3/8" NPT x 1/4"	82190
12	Safety Valve, 1/4" NPT Male	81321
13	Female Cross, 1/4" NPT	82174
14	Ball Valve, Vented 1/4" NPT	81843
15	Connector, Male 1/4" Dia.	81383
16	Nipple, Close 1/4" NPT x Close	7367
17	Plug, Square Head 3/8" NPT	82119
18	Nut, Jam 1-1/2"-12 UNF-2B	82180
19	Pickup Tube, 2-Gallon Tank	82185
20	Tank, 2-Gallon SST w/Lid	82166

Teflon is a trademark of E.I. DuPont

# AUTOPILOT™ UNIT DIAGRAMS/PARTS LIST

## Top Feed Solvent Tank Assembly

5-Gallon Top Feed Solvent Flush Tank, Stainless Steel ..... Order #5609

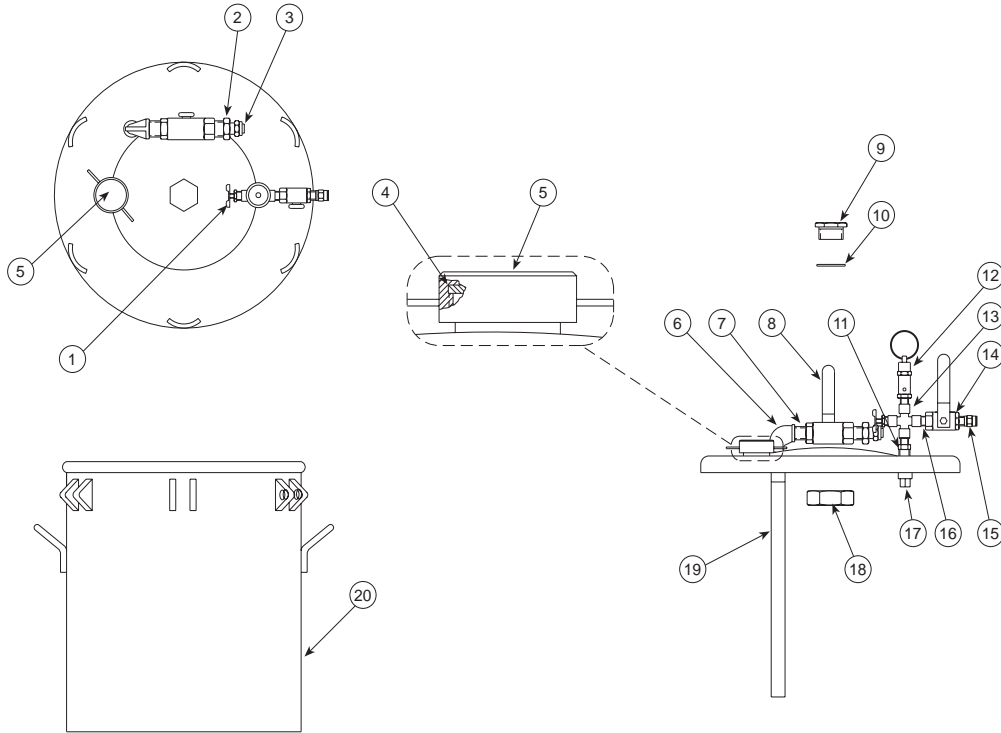


Diagram Number	Description	Part Number
1	Fitting, Drain Cock 1/4" NPT	82178
2	Tube Fitting, Male Connector	81833
3	Nut/Sleeve Assembly, Brass	82071
4	Gasket, Chlororene & Cork	82176
5	Filler Cap	82175
6	Elbow, 90 Degree Street	7372
7	Nipple, Close 3/8" NPT x Close	7366
8	Ball Valve, 3/8" NPT Female	41308
9	Plug, Tank Lid SST	82182
10	O-Ring, Viton	82181
11	Male Reducer, 3/8" NPT x 1/4" NPT	82190
12	Safety Valve, 1/4" NPT Male	81321
13	Female Cross, 1/4" NPT	82174
14	Ball Valve, Vented 1/4" NPT	81843
15	Connector, Male 1/4" Dia.	81383
16	Nipple, Close 1/4" NPT x Close	7367
17	Plug, Square Head 3/8" NPT	82119
18	Nut, Jam 1-1/2"-12 UNF-2B	82180
19	Pickup Tube, 5-Gallon Tank	82183
20	Tank, 5-Gallon SST w/Lid	82167

# AUTOPILOT™ UNIT DIAGRAMS/PARTS LIST

## Top Feed Material Tank Assembly

2-Gallon Top Feed Material Tank, Stainless Steel .....	Part #5603
5-Gallon Top Feed Material Tank, Stainless Steel .....	Part #5607
10-Gallon Top Feed Material Tank, Stainless Steel .....	Part #5612
15-Gallon Top Feed Material Tank, Stainless Steel .....	Part #5617

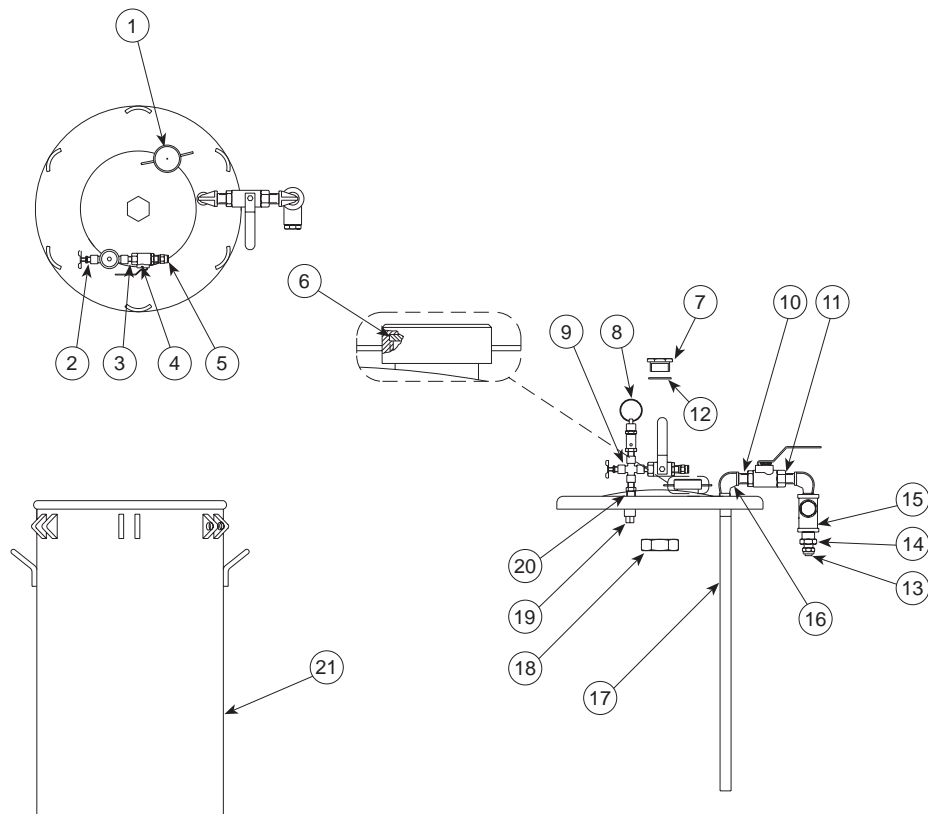


Diagram Number	Description	Part Number
1 .....	Filler Cap (not included in 2-Gallon Tank) .....	82175
2 .....	Fitting, Drain Cock 1/4" NPT .....	82178
3 .....	Nipple, Close 1/4" NPT x Close .....	7367
4 .....	Ball Valve, Vented 1/4" NPT .....	81843
5 .....	Connector, Male Straight .....	82139
6 .....	Gasket, Chlororene & Cork (not included in 2-Gallon Tank) .....	82176
7 .....	Plug, Tank Lid SST .....	82182
8 .....	Safety Valve, 1/4" NPT Male .....	81321
9 .....	Female Cross, 1/4" NPT .....	82174
10 .....	Nipple, Close 3/8" NPT x Close .....	7366
11 .....	Ball Valve, 3/8" NPT Female .....	41308
12 .....	O-Ring, Teflon® (for 2-Gallon Tank) .....	82186
12 .....	O-Ring, Teflon® (for 5-, 10-, 15-Gallon Tank) .....	82181
13 .....	Nut/Sleeve Assembly, Brass .....	82072

Teflon is a trademark of E.I. DuPont

Continued on next page

© Copyright 2002, Mattson Spray Equipment, Division of Rice Lake Weighing Systems, Inc., Rice Lake, WI USA. All rights reserved.  
Prices & specifications subject to change without notice.



# AUTOPILOT™ UNIT DIAGRAMS/PARTS LIST

## Top Feed Material Tank Assembly (continued)

- 2-Gallon Top Feed Material Tank, Stainless Steel ..... Part #5603  
 5-Gallon Top Feed Material Tank, Stainless Steel ..... Part #5607  
 10-Gallon Top Feed Material Tank, Stainless Steel ..... Part #5612  
 15-Gallon Top Feed Material Tank, Stainless Steel ..... Part #5617

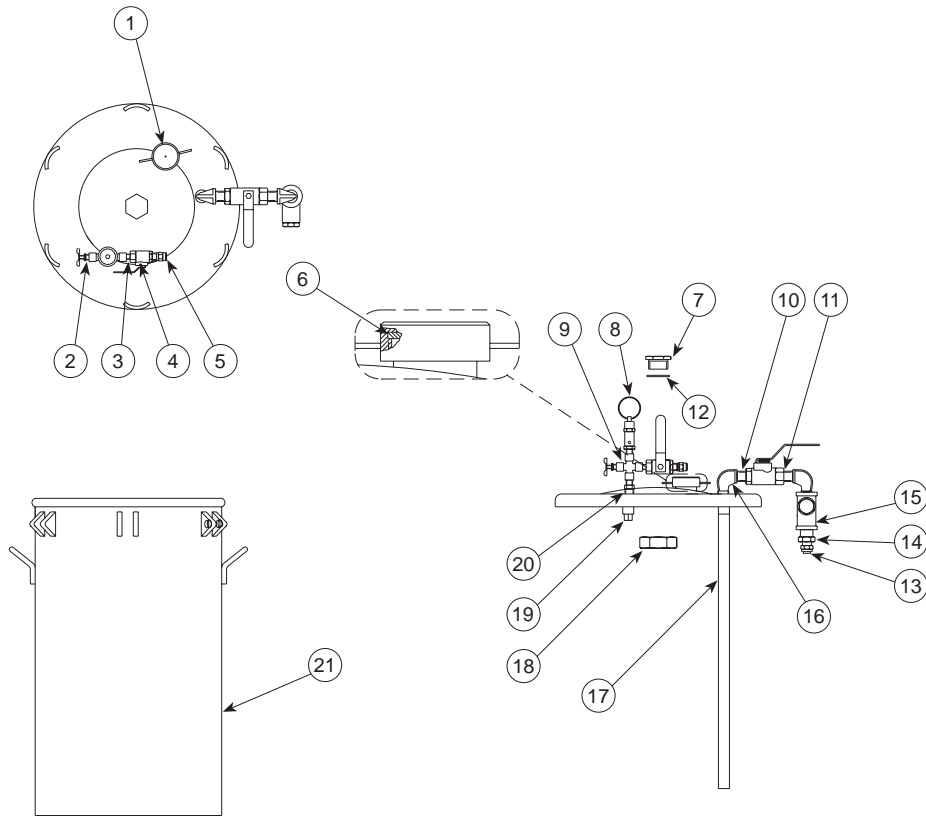


Diagram Number	Description	Part Number
14	Tube Fitting, Male Connector	81835
15	Strainer, In-Line 3/8" NPT	41306
16	Elbow, 90 Degree Street	7372
17	Pickup Tube, 2-Gallon Tank	82185
17	Pickup Tube, 5-Gallon Tank	82183
17	Pickup Tube, 10-Gallon Tank	82184
17	Pickup Tube, 15-Gallon Tank	82197
18	Nut, Jam 1-1/2"-12 UNF-2B	82180
19	Plug, Square Head 3/8" NPT	82119
20	Male Reducer, 3/8" NPT x 1/4"	82190
21	Tank, 2-Gallon SST w/Lid	82166
21	Tank, 5-Gallon SST w/Lid	82167
21	Tank, 10-Gallon SST w/Lid	82168
21	Tank, 15-Gallon SST w/Lid	82169

# UNIT DIAGRAMS/PARTS LIST

## Top Feed Material Tank Assembly with Agitator and Fittings

- 5-Gallon Top Feed Material Tank, Stainless Steel ..... Part #5608  
 10-Gallon Top Feed Material Tank, Stainless Steel ..... Part #5613  
 15-Gallon Top Feed Material Tank, Stainless Steel ..... Part #5618

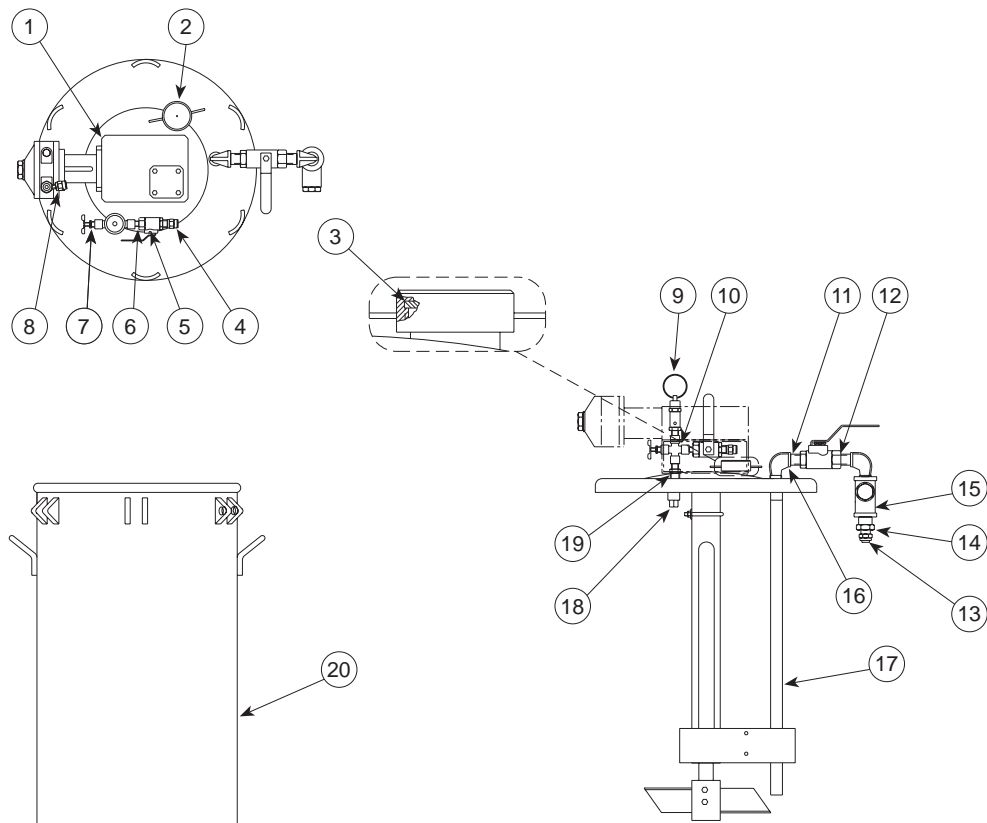


Diagram Number	Description	Part Number
1	Agitator, 5-Gallon SST	82171
1	Agitator, 10-Gallon SST	82172
1	Agitator, 15-Gallon SST	82173
2	Filler Cap	82175
3	Gasket, Chlororene & Cork	82176
4	Connector, Male Straight	82139
5	Ball Valve, Vented 1/4" NPT	81843
6	Nipple, Close 1/4" NPT x Close	7367
7	Fitting, Drain Cock 1/4" NPT	82178
8	Connector, Male Straight	82177
9	Safety Valve, 1/4" NPT Male	81321
10	Female Cross, 1/4" NPT	82174
11	Nipple, Close 3/8" NPT x Close	7366

Continued on next page

# AUTOPILOT™ UNIT DIAGRAMS/PARTS LIST

## Top Feed Material Tank Assembly w/Agitator and Fittings (cont.)

- 5-Gallon Top Feed Material Tank, Stainless Steel ..... Part #5608  
 10-Gallon Top Feed Material Tank, Stainless Steel ..... Part #5613  
 15-Gallon Top Feed Material Tank, Stainless Steel ..... Part #5618

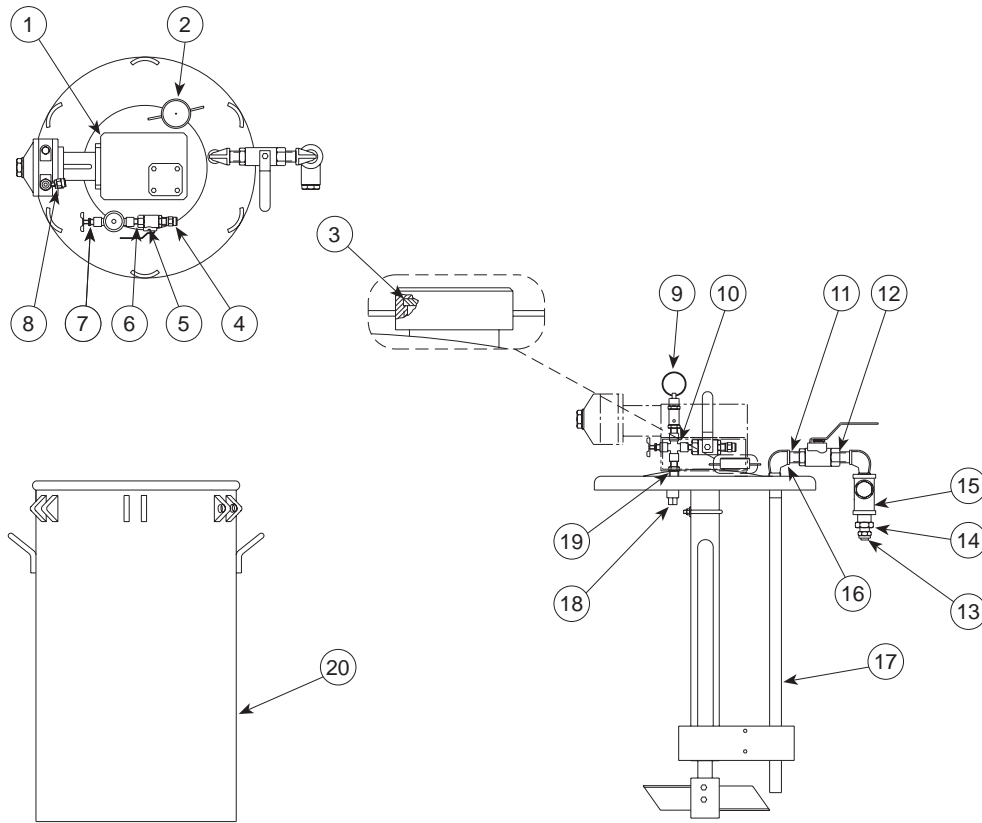


Diagram Number	Description	Part Number
12	Ball Valve, 3/8" NPT Female	41308
13	Nut/Sleeve Assembly, Brass	82072
14	Tube Fitting, Male Conn	81835
15	Strainer, In-Line 3/8" NPT	41306
16	Elbow, 90 Degree Street	7372
17	Pickup Tube, 5-Gallon Tank	82183
17	Pickup Tube, 10-Gallon Tank	82184
17	Pickup Tube, 15-Gallon Tank	82197
18	Plug, Square Head 3/8" NPT	82119
19	Male Reducer, 3/8" NPT x 1/4" NPT	82190
20	Tank, 5-Gallon SST w/Lid	82167
20	Tank, 10-Gallon SST w/Lid	82168
20	Tank, 15-Gallon SST w/Lid	82169



# UNIT DIAGRAMS/PARTS LIST

## Bottom Feed Material Tank Assembly with Agitator and Fittings

- 5-Gallon Bottom Feed Material Tank, Stainless Steel ..... Part #5606  
 10-Gallon Bottom Feed Material Tank, Stainless Steel ..... Part #5611  
 15-Gallon Bottom Feed Material Tank, Stainless Steel ..... Part #5616

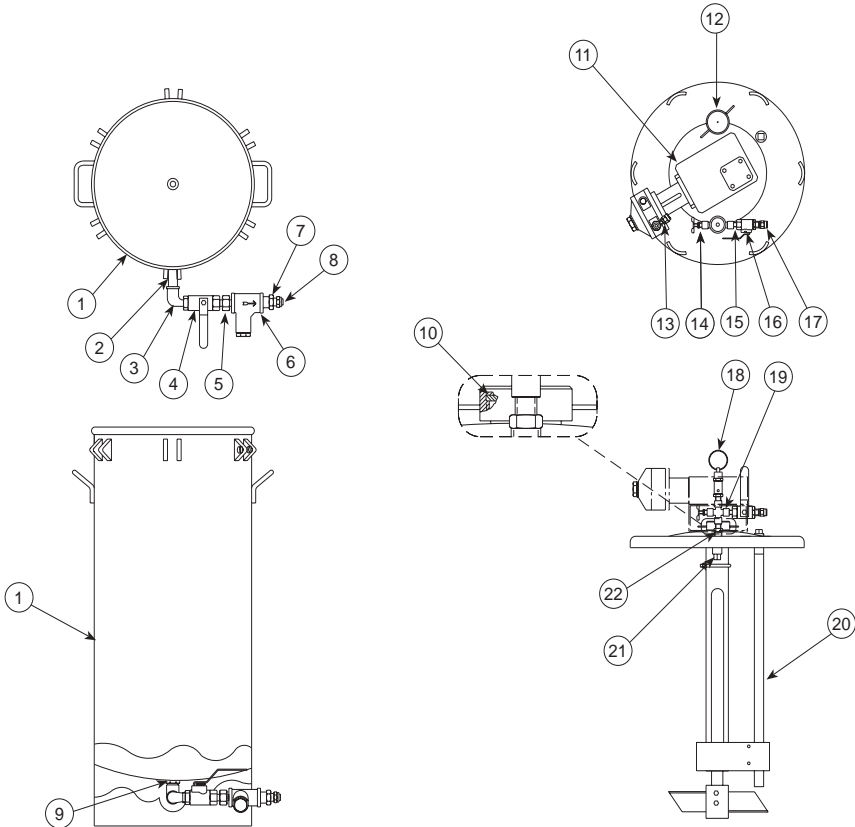


Diagram Number	Description	Part Number
1	Tank, 5-Gallon SST w/Lid	82167
1	Tank, 10-Gallon SST w/Lid	82168
1	Tank, 15-Gallon SST w/Lid	82169
2	Nipple, 1/2" NPT x 8" Brass	82118
3	Elbow, 90 Degree Street	82117
4	Ball Valve, 1/2" NPT Female	46435
5	Reducer, 1/2" NPT x 3/8" NPT	41305
6	Strainer, In-Line 3/8" NPT	41306
7	Tube Fitting, Male Connector	81835
8	Nut/Sleeve Assembly, Brass	82072
9	Hex Bushing, 3/4" NPT x 1/2"	82179
10	Gasket, Chlororene & Cork	82176
11	Agitator, 5-Gallon SST	82171
11	Agitator, 10-Gallon SST	82172

*Continued on next page*

# AUTOPILOT™ UNIT DIAGRAMS/PARTS LIST

## Bottom Feed Material Tank Assembly w/Agitator and Fittings (cont.)

- 5-Gallon Bottom Feed Material Tank, Stainless Steel ..... Part #5606  
 10-Gallon Bottom Feed Material Tank, Stainless Steel ..... Part #5611  
 15-Gallon Bottom Feed Material Tank, Stainless Steel ..... Part #5616

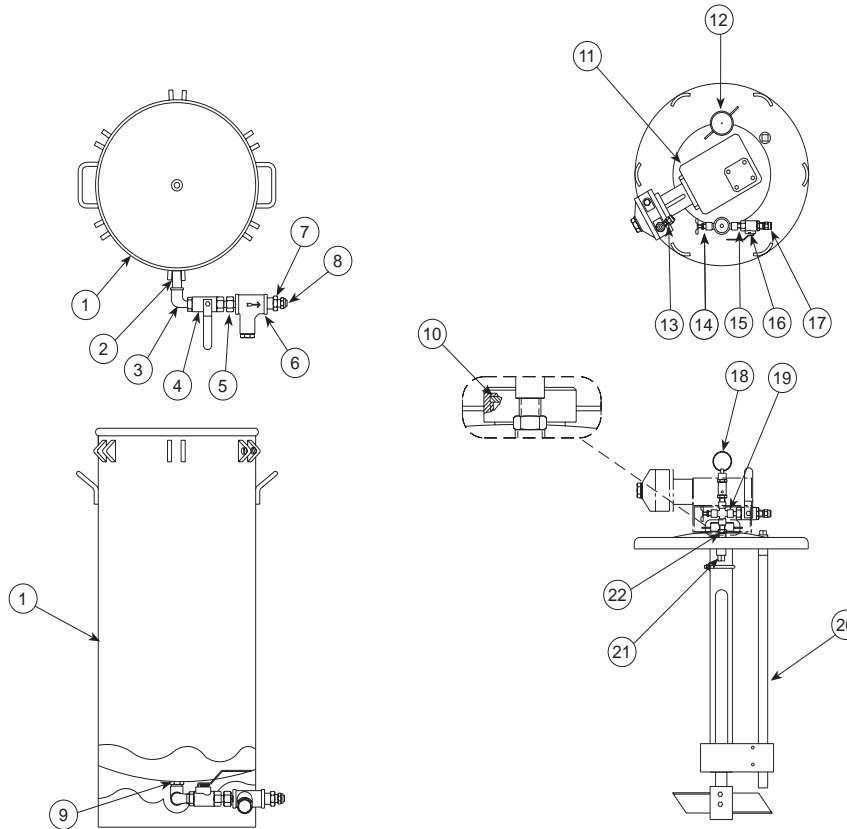


Diagram Number	Description	Part Number
11	Agitator, 15-Gallon SST	82173
12	Filler Cap	82175
13	Connector, Male Straight	82177
14	Fitting, Drain Cock 1/4" NPT	82178
15	Nipple, Close 1/4" NPT x Close	7367
16	Ball Valve, Vented 1/4" NPT	81843
17	Connector, Male Straight	82139
18	Safety Valve, 1/4" NPT Male	81321
19	Female Cross, 1/4" NPT	82174
20	Pickup Tube, 5-Gallon Tank	82183
20	Pickup Tube, 10-Gallon Tank	82184
20	Pickup Tube, 15-Gallon Tank	82197
21	Plug, Square Head 3/8" NPT	82119
22	Male Reducer, 3/8" NPT x 1/4" NPT	82190

# AUTOPILOT™ UNIT DIAGRAMS/PARTS LIST

## Bottom Feed Activator Tank Assembly with Fittings

2-Gallon Bottom Feed Activator Tank, Stainless Steel .....	Part #5602
5-Gallon Bottom Feed Activator Tank, Stainless Steel .....	Part #5605
10-Gallon Bottom Feed Activator Tank, Stainless Steel .....	Part #5610
15-Gallon Bottom Feed Activator Tank, Stainless Steel .....	Part #5615

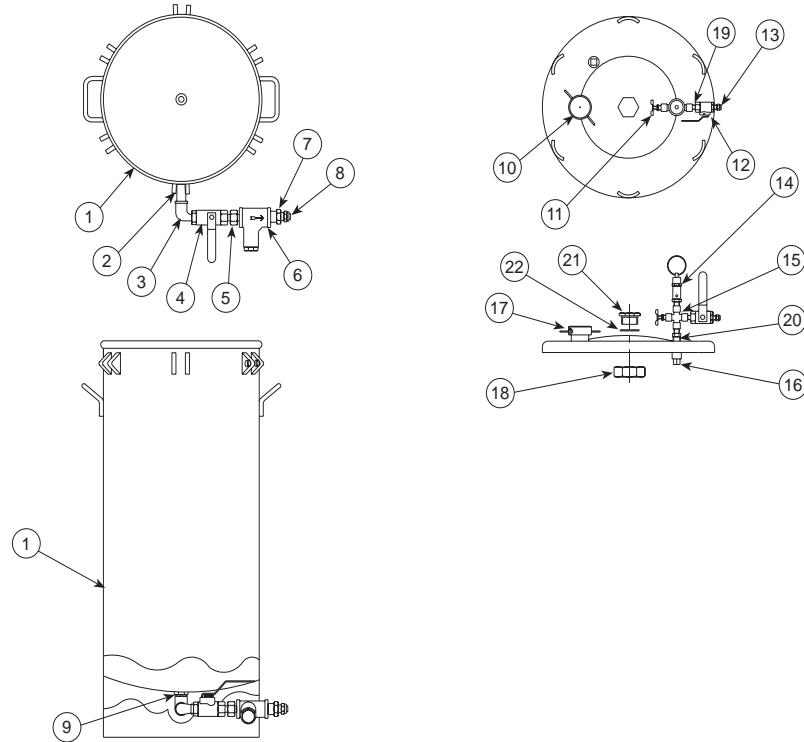


Diagram Number	Description	Part Number
1 .....	Tank, 2-Gallon SST w/Lid .....	82166
1 .....	Tank, 5-Gallon SST w/Lid .....	82167
1 .....	Tank, 10-Gallon SST w/Lid .....	82168
1 .....	Tank, 15-Gallon SST w/Lid .....	82169
2 .....	Nipple, 1/2" NPT x 8" Brass .....	82118
3 .....	Elbow, 90 Degree Street .....	82117
4 .....	Ball Valve, 1/2" NPT Female .....	46435
5 .....	Reducer, 1/2" NPT x 3/8" NPT .....	41305
6 .....	Strainer, In-Line 3/8" NPT .....	41306
7 .....	Tube Fitting, Male Connector .....	81835
8 .....	Nut/Sleeve Assembly, Brass .....	82072
9 .....	Hex Bushing, 3/4" NPT x 1/2" .....	82179
10 .....	Filler Cap (not included in 2-Gallon) .....	82175

Continued on next page

# AUTOPILOT™ UNIT DIAGRAMS/PARTS LIST

## Bottom Feed Activator Tank Assembly with Fittings (continued)

- 2-Gallon Bottom Feed Activator Tank, Stainless Steel ..... Part #5602  
 5-Gallon Bottom Feed Activator Tank, Stainless Steel ..... Part #5605  
 10-Gallon Bottom Feed Activator Tank, Stainless Steel ..... Part #5610  
 15-Gallon Bottom Feed Activator Tank, Stainless Steel ..... Part #5615

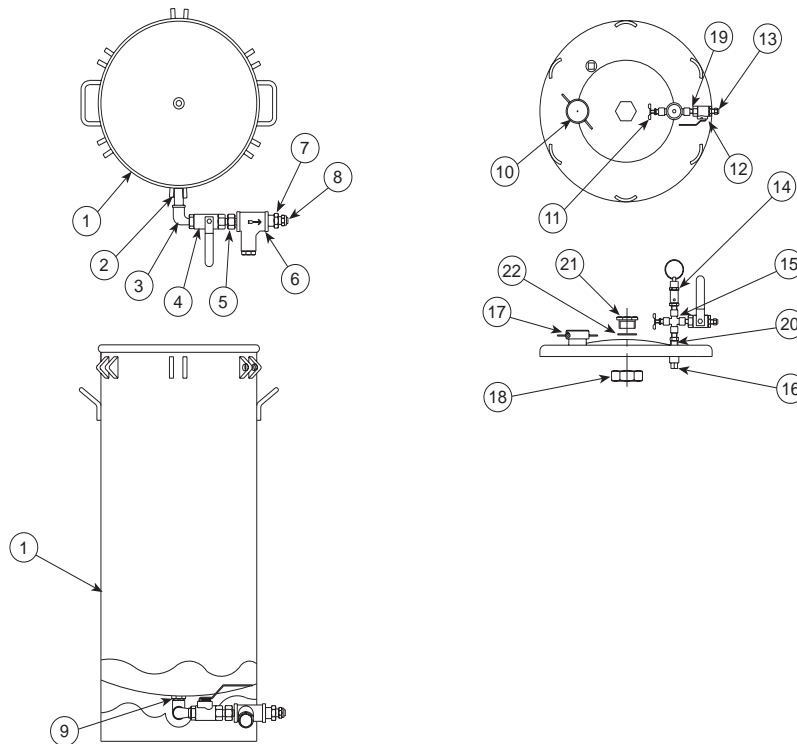


Diagram Number	Description	Part Number
11	Fitting, Drain Cock 1/4" NPT	82178
12	Ball Valve, Vented 1/4" NPT	81843
13	Connector, Male Straight	82139
14	Safety Valve, 1/4" NPT Male	81321
15	Female Cross, 1/4" NPT	82174
16	Plug, Square Head 3/8" NPT	82119
17	Gasket, Chlororene & Cork (not included in 2-Gallon)	82176
18	Nut, Jam 1-1/2"-12 UNF-2B	82180
19	Nipple, Close 1/4" NPT x Close	7367
20	Male Reducer, 3/8" NPT x 1/4" NPT	82190
21	Plug, Tank Lid SST	82182
22	O-Ring, Viton	82181

# AUTOPILOT™ UNIT DIAGRAMS/PARTS LIST

## 4-In-1 Proportioner Hose for QuickFlush™ Static Mixer

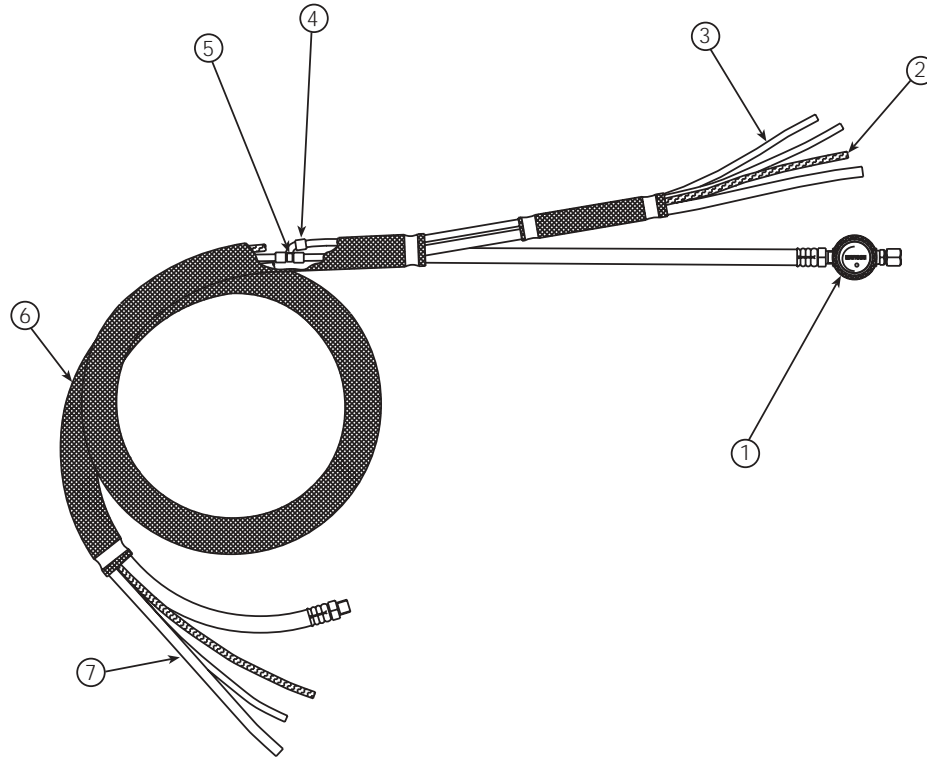


Diagram Number	Description	Part Number
1-7	15 Ft. Hose Assembly	7817
1-7	20 Ft. Hose Assembly	7822
1-7	25 Ft. Hose Assembly	7827
1-7	30 Ft. Hose Assembly	7832
1-7	35 Ft. Hose Assembly	7837
1-7	40 Ft. Hose Assembly	7842
1-7	50 Ft. Hose Assembly	7852
1-7	70 Ft. Hose Assembly	7872
1-7	100 Ft. Hose Assembly	7902
1	Air Cap Regulator Assembly	8060
2	1/4" OD Teflon® Activator Tubing (Specify Length in Feet)	82070
3	1/4" OD Yellow Nylon Solvent Tubing (Specify Length in Feet)	69039
4	Retaining Sleeves (3 Pieces Required)	69025
5	"Y" Connector for 1/4" OD Tubing	81924
6	Nylon Expandable Webbing (Specify Length in Feet)	81719
7	3/8" OD Clear Nylon Tubing (Specify Length in Feet)	81911
Not Shown	3/8" OD Replacement Nut with Brass Sleeve Assembly	82072
Not Shown	1/4" OD Replacement Nut with Brass Sleeve Assembly	82071

Teflon is a trademark of E.I. DuPont

© Copyright 2002, Mattson Spray Equipment, Division of Rice Lake Weighing Systems, Inc., Rice Lake, WI USA. All rights reserved.  
Prices & specifications subject to change without notice.

**MATTSON**  
SPRAY EQUIPMENT  
DIVISION OF RICE LAKE WEIGHING SYSTEMS, INC.

# AUTOPILOT™ UNIT DIAGRAMS/PARTS LIST

## Proportioner Hose for Stationary Static Mixer

20 Ft. Hose Assembly .....	Order #7920
30 Ft. Hose Assembly .....	Order #7930
50 Ft. Hose Assembly .....	Order #7950

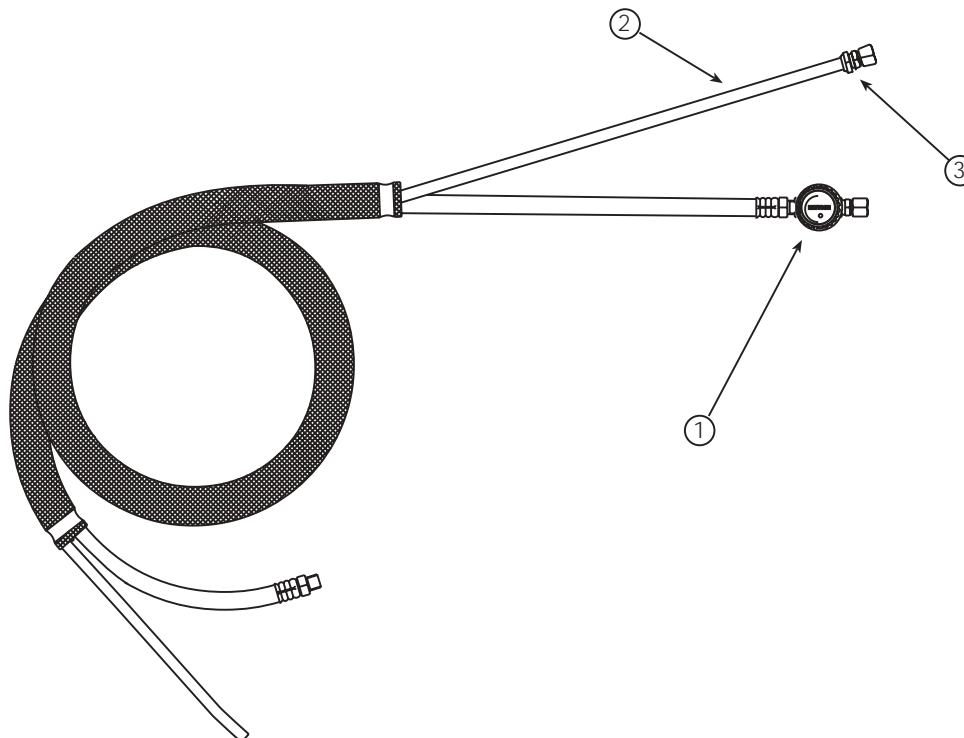


Diagram Number	Description	Part Number
1 .....	Air Cap Regulator Assembly .....	8061
2 .....	3/8" OD Clear Nylon Tubing (Specify Length in Feet) .....	81911
3 .....	Fluid Inlet Swivel Connector .....	81928
Not Shown .....	3/8" OD Replacement Nut with Brass Sleeve Assembly .....	82072

# AUTOPILOT™ UNIT DIAGRAMS/PARTS LIST

## Whip Hose Attachment

Whip Hose Attachment ..... Order 9147

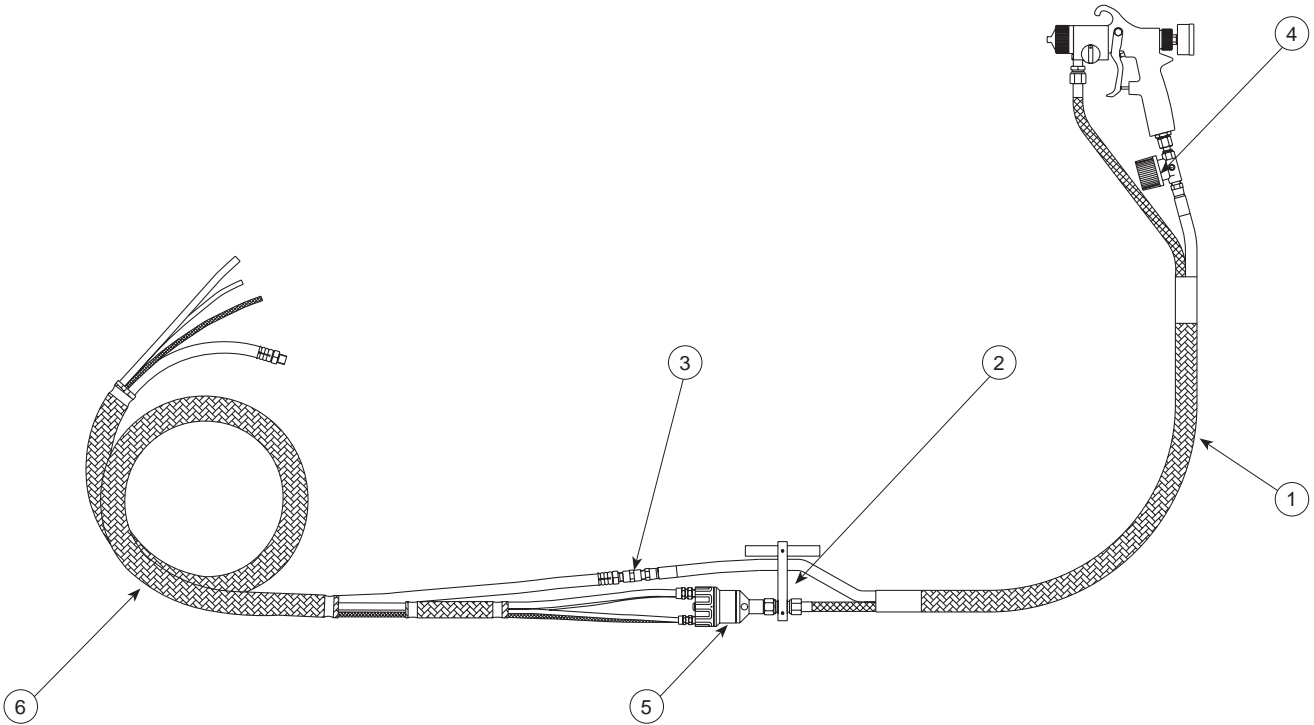


Diagram Number	Description	Part Number
1-3	Whip Hose Attachment	9147
1	Hose, Air/Fluid Assembly	63721
2	Handle Assembly	63722
3	Coupler, 1/4" NPT Brass	82129
4	Air Cap Regulator Assembly	8060
5	QuickFlush™, Static Mixer	9145
6	15 Ft. Proportioner Hose Assembly	7817
6	20 Ft. Proportioner Hose Assembly	7822
6	25 Ft. Proportioner Hose Assembly	7827
6	30 Ft. Proportioner Hose Assembly	7832
6	35 Ft. Proportioner Hose Assembly	7837
6	40 Ft. Proportioner Hose Assembly	7842
6	50 Ft. Proportioner Hose Assembly	7852
6	70 Ft. Proportioner Hose Assembly	7872
6	100 Ft. Proportioner Hose Assembly	7902