

Contents	29-34
Repair Kits	30-31
Multi-Pack Part Kits	31-33
Maintenance Items	33-34
Gun Cleaning	34
Operation Manuals	34

ACCESSORIES

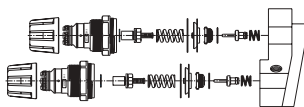
Repair Kits

Regulator Rebuild Kit (8093) Part #7085



- Includes: 1-Valve Assembly #81662
- 1-Diaphragm Assembly #81663
- 1-Thrust Washer #81803
- 1-Slip Ring #81806
- 1-Valve Seat #81808
- 1-Gasket #81809
- 1-Valve Spring #81811

Dual Regulator Rebuild Kit (8125) Part #7086



- Includes: 2-Valve Assembly #81662
- 2-Diaphragm Assembly #81663
- 2-Thrust Washer #81803
- 2-Slip Ring #81806
- 2-Valve Seat #81808
- 2-Gasket #81809
- 2-Valve Spring #81811

Regulator Rebuild Kit (8047 & 8045) Part #7071



- Includes: 1-Valve Seat Gasket #40127
- 1-Regulator Push Pin #40128
- 1-Regulator Piston O-Ring #40133
- 1-Foam Quick-Connect Washer #40230
- 1-Regulator Valve #40244
- 1-3-Pack Regulator Fuses #70045

IQ™/CrossFire™ Handle/Cartridge Rebuild Kit Part #7072



- Includes: 1-Fan Control Slide #20008
- 1-Thumb Screw #70028
- 1-IQ™ Gun Spool Spring #81007
- 1-Trigger Pin/Valve Assembly #81059
- 1-IQ™ Gun Valve Gasket #81203
- 1-Cartridge Rebuild Kit #7148

Note: High Pressure Seal #81057 Sold Separately
For use with: IQ™/IQ™ Top Load/CrossFire™ Gun Handle Assemblies

LP-DC™ Rebuild Kit Part #7149



- Includes: 1-Air Valve Spring #40146
- 1-Catch-All Filter #80009
- 1-Trigger Spring #40000
- 1-Air Inlet Tube #81055
- 1-LiquidLock®/Ball Check Assembly #81054
- 1-3-Pack Regulator Fuses #70045
- 1-Fan Control Slide #20008
- 1-Thumb Screw #70028
- 1-Cartridge Rebuild Kit #7148

Continued on next page

Repair Kits (continued)



Air Inlet Tube & LiquidLock®/Ball Check Retrofit Kit Part #81165
 To Convert: All Mattson Systems
 Includes: 1-Air Inlet Tube #81055
 1-LiquidLock®/Ball Check #81054
 1-Assembly Procedures



Cartridge Rebuild Kit Part #7148
 Includes: 1-Nozzle Seal #40015
 1-Fluid Tip Seal #40104
 1-Air Seal #40059
 1-Needle Spring #40008
 1-"E"-Ring #40007
 2-Seals #40006

*Note: High Pressure Seal #81057 Sold Separately
 For use with: All Mattson Cartridge Assemblies*



LiquidLock®/Ball Check Retrofit Kit Part #81162
 To Convert: All Mattson Systems
 Includes: 1-Air Inlet Tube Adapter #81166
 1-LiquidLock®/Ball Check #81054
 1-Assembly Procedures

Multi-Pack Part Kits



IQ™ Air Inlet Tube 5-Pack Part #7093
 For Use With: IQ™ One-Liter Pressure Cup #8126 or #9300
 Includes: Air Inlet Tube #81799



IQ™ Air Inlet Tube 5-Pack Part #7152
 For Use With: IQ™ One-Liter Pressure Cup #8039
 Includes: Air Inlet Tube Assembly #81036



Air Inlet Tube 5-Pack Part #7124
 For Use With: PC-10 One-Liter Pressure Cup #8005
 Includes: Air Inlet Tube Assembly #81055



IQ™ Top-Load Air Inlet Tube 5-Pack Part #7154
 For Use With: IQ™ Top-Load Pressure Cup #8225, #8228 or #8500
 Includes: Air Inlet Tube Assembly #81251

Continued on next page

ACCESSORIES

Multi-Pack Part Kits (continued)



LiquidLock®/Ball Check Assembly 5-Pack Part #7144

For Use With: All Mattson Cup Assemblies
Includes: LiquidLock®/Ball Check #81054



Catch-All Filter 5-Pack Part #7123

For Use With: All Mattson IQ™ Cups & Tank Assemblies (Except IQ™ Top-Load)
Includes: Catch-All Filter #80009



Cup Gasket 5-Pack Part #7122

For Use With: One-Liter Pressure Cup #8039, #8005 and
IQ™ Top-Load Aluminum Cup #8225
Includes: Cup Gasket #40073



Cup Gasket 5-Pack Part #7153

For Use With: One-Liter Pressure Cup #8126 and
IQ™ Top-Load Aluminum Cup #8228
Includes: Cup Gasket #81853



Blue Cup Gasket 5-Pack Part #9393

For Use With: One-Liter Pressure Cup #9300 and
IQ™ Top-Load Aluminum Cup #8500
Includes: Cup Gasket #65161



Fan Control Slide 5-Pack Part #7125

For Use With: All Mattson Spray Gun Handles
Includes: Fan Control Slides #20008



Fluid Tip Seal 5-Pack Part #7142

For Use With: All Cartridge Assemblies
Includes: Fluid Tip Seals #40104



Nozzle Seal 5-Pack Part #7143

For Use With: All Cartridge Assemblies
Includes: Nozzle Seals #40015

Multi-Pack Part Kits (continued)



Air Directing Seal 5-Pack Part #7141

For Use With: All Cartridge Assemblies
Includes: Air Directing Seals #40059



Thumbscrew 5-Pack Part #7119

For Use With: All Mattson Spray Gun Handles
Includes: Thumbscrews #70028



Needle Packing Seal 3-Pack Part #7102

For Use With: All Cartridge Assemblies
Includes: Needle Packing Seals #40006



Regulator Fuse 3-Pack Part #70045

For Use With: Regulators #8045 & #8047
Includes: Regulator Fuses #30016

Maintenance Items



SuperGlide™ (24 tubes per box) Part #5001

Use For: Gel-Type Lubricant for all Spray Equipment
24 of Single Tube Part #4129



8 oz. Jar of SuperGlide™ Part #5002

Use For: Gel-Type Lubricant for all Spray Equipment



ColorCan Rigid Plastic Liner Part #40211

For Use With: Mattson 2.5-Gallon ColorCan
Use For: Easy Cleaning to Keep the Can Like New

Continued on next page

ACCESSORIES

Maintenance Items (continued)



ColorCan Disposable Liners (Box of 500) Part #4252

For Use With: Mattson 2.5-Gallon ColorCan; Must be Used with
2.5-Gallon Metal Liner #4284
Use For: Eliminating Extensive Cleaning
Material Containment Ease



5-Gallon CrossFire™ Tank Liners (Box of 100) Part #4321

For Use With: Mattson 5-Gallon ColorCan
Use For: Eliminating Extensive Cleaning
Material Containment Ease

Gun Cleaning



Complete Cleaning Kit Part #7006

Use For: Cleaning all Spray Gun Assemblies



Cleaning Clip Part #4173

Use For: Locking the Cartridge in Open Position for Cleaning Procedures



Solvent Bottle Part #4161

Use For: Holding 500 ml/16 oz of Solvent
Quick and Easy Cleaning

Operation Manuals



IQ™ Operation Manual Part #81103

Includes: Information on IQ™ A, B & Primer Systems

IQ™ Top-Load Operation Manual Part #81253

Includes: Information on IQ™ Top-Load A, B & Primer Systems

IQ™ -2Q Operation Manual Part #40291

IQ™ -CC Operation Manual Part #40315

QS™ Operation Manual Part #40316

CrossFire™ Operation Manual Part #81467